

## 53BP1 (Phospho-Ser29) Antibody

Catalog No: #12569



Package Size: #12569-1 50ul #12569-2 100ul

Orders: [order@signalwayantibody.com](mailto:order@signalwayantibody.com)Support: [tech@signalwayantibody.com](mailto:tech@signalwayantibody.com)

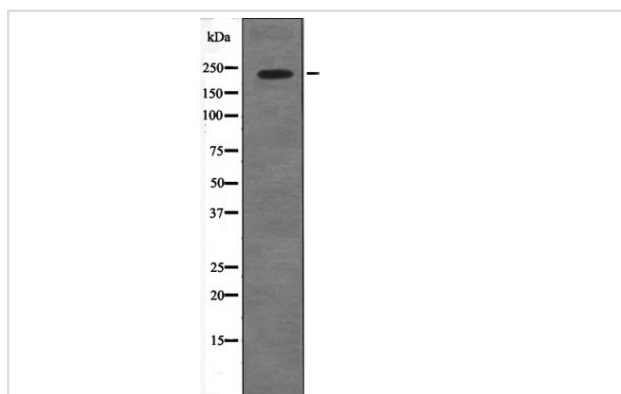
## Description

Product Name	53BP1 (Phospho-Ser29) Antibody
Host Species	Rabbit
Clonality	Polyclonal
Purification	Antibodies were produced by immunizing rabbits with synthetic phosphopeptide and KLH conjugates. Antibodies were purified by affinity-chromatography using epitope-specific phosphopeptide. Non-phospho specific antibodies were removed by chromatography using non-phosphopeptide.
Applications	WB
Species Reactivity	Hu
Specificity	53BP1 (Phospho-Ser29) Antibody detects endogenous levels of 53BP1 only when phosphorylated at Ser29
Immunogen Type	Peptide
Immunogen Description	A synthesized peptide derived from human 53BP1 (Phospho-Ser29)
Target Name	53BP1
Modification	Phospho
Other Names	TP53BP1, 53BP1, p202, p53-binding protein 1, p53-binding protein 53bp1, p53BP1
Accession No.	Swiss-Prot#: Q12888NCBI Gene ID: 7158
Target Species	human
Calculated MW	214kd
Concentration	1.0mg/ml
Formulation	Rabbit IgG in phosphate buffered saline (without Mg <sup>2+</sup> and Ca <sup>2+</sup> ), pH 7.4, 150mM NaCl, 0.02% sodium azide and 50% glycerol.
Storage	Store at -20°C

## Application Details

Western blotting: 1:1000

## Images



Western blot analysis 53BP1 (Phospho-Ser29) using COS7 whole cell lysates

---

Note: This product is for in vitro research use only and is not intended for use in humans or animals.