

## Bim (Phospho-Ser44/104) Antibody

Catalog No: #12580



Package Size: #12580-1 50ul #12580-2 100ul

Orders: [order@signalwayantibody.com](mailto:order@signalwayantibody.com)Support: [tech@signalwayantibody.com](mailto:tech@signalwayantibody.com)

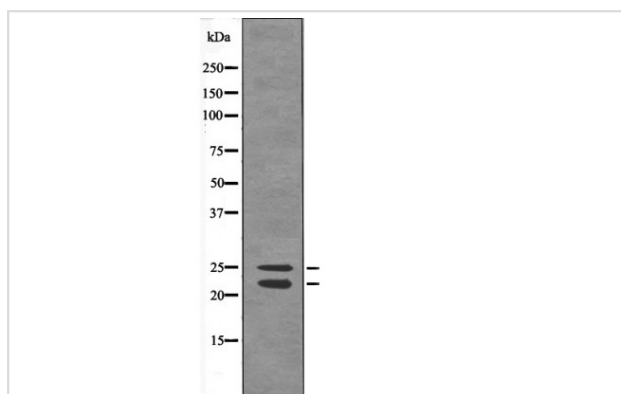
## Description

|                       |  |
|-----------------------|--|
| Product Name          | Bim (Phospho-Ser44/104) Antibody   |
| Host Species          | Rabbit   |
| Clonality             | Polyclonal   |
| Purification          | Antibodies were produced by immunizing rabbits with synthetic phosphopeptide and KLH conjugates. Antibodies were purified by affinity-chromatography using epitope-specific phosphopeptide. Non-phospho specific antibodies were removed by chromatography using non-phosphopeptide. |
| Applications          | WB   |
| Species Reactivity    | Hu Ms Rt   |
| Specificity           | Bim (Phospho-Ser44/104) Antibody detects endogenous levels of Bim only when phosphorylated at Ser44/104  |
| Immunogen Type        | Peptide  |
| Immunogen Description | A synthesized peptide derived from human Bim (Phospho-Ser44/104)   |
| Target Name           | Bim  |
| Modification          | Phospho  |
| Other Names           | BCL2L11, BIM-alpha6, BIM-beta7, Bcl-2-like protein 11, BIM-beta6, BimL, BimS, Bcl-2 interacting protein Bim, BimEL, BAM, Bcl2-L-11, BIM, BOD   |
| Accession No.         | Swiss-Prot#: O43521NCBI Gene ID: 10018   |
| Target Species        | human  |
| Calculated MW         | 25kd,22kd  |
| Concentration         | 1.0mg/ml   |
| Formulation           | Rabbit IgG in phosphate buffered saline (without Mg <sup>2+</sup> and Ca <sup>2+</sup> ), pH 7.4, 150mM NaCl, 0.02% sodium azide and 50% glycerol.   |
| Storage               | Store at -20°C   |

## Application Details

Western blotting: 1:1000

## Images



Western blot analysis Bim (Phospho-Ser44/104) using Sobital treated 293 whole cell lysates

---

Note: This product is for in vitro research use only and is not intended for use in humans or animals.