

Calpain 2 (Phospho-Ser50) Antibody

Catalog No: #12582

Package Size: #12582-1 50ul #12582-2 100ul

Orders: order@signalwayantibody.comSupport: tech@signalwayantibody.com

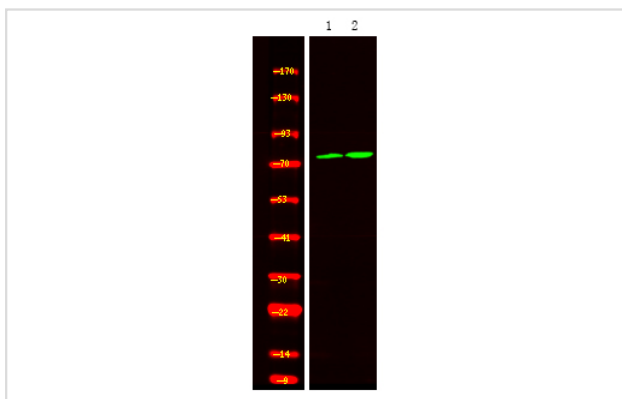
Description

| | |
|-----------------------|---|
| Product Name | Calpain 2 (Phospho-Ser50) Antibody |
| Host Species | Rabbit |
| Clonality | Polyclonal |
| Purification | Antibodies were produced by immunizing rabbits with synthetic phosphopeptide and KLH conjugates. Antibodies were purified by affinity-chromatography using epitope-specific phosphopeptide. Non-phospho specific antibodies were removed by chromatography using non-phosphopeptide. |
| Applications | WB |
| Species Reactivity | Hu |
| Specificity | Calpain 2 (Phospho-Ser50) Antibody detects endogenous levels of Calpain 2 only when phosphorylated at Ser50 |
| Immunogen Type | Peptide |
| Immunogen Description | A synthesized peptide derived from human Calpain 2 (Phospho-Ser50) |
| Target Name | Calpain 2 |
| Modification | Phospho |
| Other Names | CAPN2, Calpain 2, large subunit, Calpain ii, Calpain, large polypeptide L2, Calpain-2 catalytic subunit, Calpain 2, Calpain large polypeptide L2, Calpain-2 large subunit, CANP 2, Calpain M-type, CANP2, CANPL2, CANPml, M-type calpain, M-calpain, MCANP ... |
| Accession No. | Swiss-Prot#: P17655NCBI Gene ID: 824 |
| Target Species | human |
| Calculated MW | 80kd |
| Concentration | 1.0mg/ml |
| Formulation | Rabbit IgG in phosphate buffered saline (without Mg ²⁺ and Ca ²⁺), pH 7.4, 150mM NaCl, 0.02% sodium azide and 50% glycerol. |
| Storage | Store at -20°C |

Application Details

Western blotting: 1:1000

Images



Western Blot analysis of lysates of 1. A549 cell and 2. A549 cell treated with 100ng/mL LPS for 30min, using primary antibody at 1:1000 dilution.

Note: This product is for in vitro research use only and is not intended for use in humans or animals.