

Claudin 4 (Phospho-Tyr208) Antibody

Catalog No: #12587



Package Size: #12587-1 50ul #12587-2 100ul

Orders: order@signalwayantibody.comSupport: tech@signalwayantibody.com

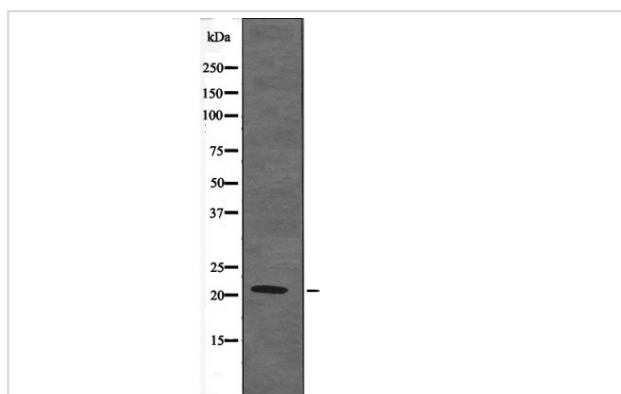
Description

Product Name	Claudin 4 (Phospho-Tyr208) Antibody
Host Species	Rabbit
Clonality	Polyclonal
Purification	Antibodies were produced by immunizing rabbits with synthetic phosphopeptide and KLH conjugates. Antibodies were purified by affinity-chromatography using epitope-specific phosphopeptide. Non-phospho specific antibodies were removed by chromatography using non-phosphopeptide.
Applications	WB
Species Reactivity	Hu
Specificity	Claudin 4 (Phospho-Tyr208) Antibody detects endogenous levels of Claudin 4 only when phosphorylated at Tyr208
Immunogen Type	Peptide
Immunogen Description	A synthesized peptide derived from human Claudin 4 (Phospho-Tyr208)
Target Name	Claudin 4
Modification	Phospho
Other Names	CLDN4, Claudin-4, CPE-receptor, CPETR, CPETR1, Claudin 4, CPE-R, HCPE-R, WBSCR8, CPER
Accession No.	Swiss-Prot#: O14493NCBI Gene ID: 1364
Target Species	human
Calculated MW	22kd
Concentration	1.0mg/ml
Formulation	Rabbit IgG in phosphate buffered saline (without Mg ²⁺ and Ca ²⁺), pH 7.4, 150mM NaCl, 0.02% sodium azide and 50% glycerol.
Storage	Store at -20°C

Application Details

Western blotting: 1:1000

Images



Western blot analysis Claudin 4 (Phospho-Tyr208) using K562 whole cell lysates

Note: This product is for in vitro research use only and is not intended for use in humans or animals.