

Cyclin B1 (Phospho-Ser128) Antibody

Catalog No: #12595



Package Size: #12595-1 50ul #12595-2 100ul

Orders: order@signalwayantibody.comSupport: tech@signalwayantibody.com

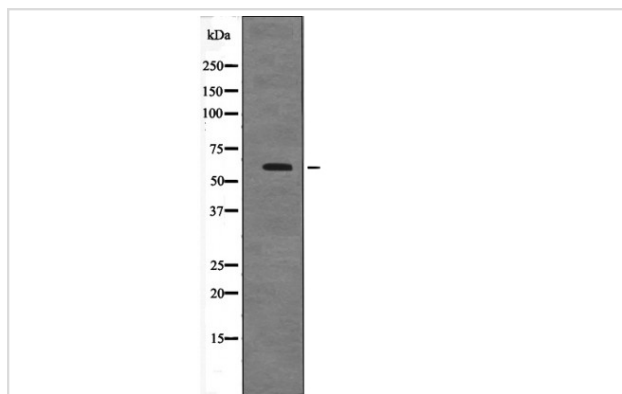
Description

Product Name	Cyclin B1 (Phospho-Ser128) Antibody
Host Species	Rabbit
Clonality	Polyclonal
Purification	Antibodies were produced by immunizing rabbits with synthetic phosphopeptide and KLH conjugates. Antibodies were purified by affinity-chromatography using epitope-specific phosphopeptide. Non-phospho specific antibodies were removed by chromatography using non-phosphopeptide.
Applications	WB
Species Reactivity	Hu Ms Rt
Specificity	Cyclin B1 (Phospho-Ser128) Antibody detects endogenous levels of Cyclin B1 only when phosphorylated at Ser128
Immunogen Type	Peptide
Immunogen Description	A synthesized peptide derived from human Cyclin B1 (Phospho-Ser128)
Target Name	Cyclin B1
Modification	Phospho
Other Names	CCNB1, CCNB, Cyclin B1, G2/mitotic-specific cyclin-B1, G2/mitotic-specific cyclin B1
Accession No.	Swiss-Prot#: P14635NCBI Gene ID: 891
Target Species	human
Calculated MW	60kd
Concentration	1.0mg/ml
Formulation	Rabbit IgG in phosphate buffered saline (without Mg ²⁺ and Ca ²⁺), pH 7.4, 150mM NaCl, 0.02% sodium azide and 50% glycerol.
Storage	Store at -20°C

Application Details

Western blotting: 1:1000

Images



Western blot analysis Cyclin B1 (Phospho-Ser128) using PI3-kinase H₂O₂ treated COS7 whole cell lysates

Note: This product is for in vitro research use only and is not intended for use in humans or animals.