

## Cyclin D1 (Phospho-Thr288) Antibody

Catalog No: #12597



Package Size: #12597-1 50ul #12597-2 100ul

Orders: [order@signalwayantibody.com](mailto:order@signalwayantibody.com)Support: [tech@signalwayantibody.com](mailto:tech@signalwayantibody.com)

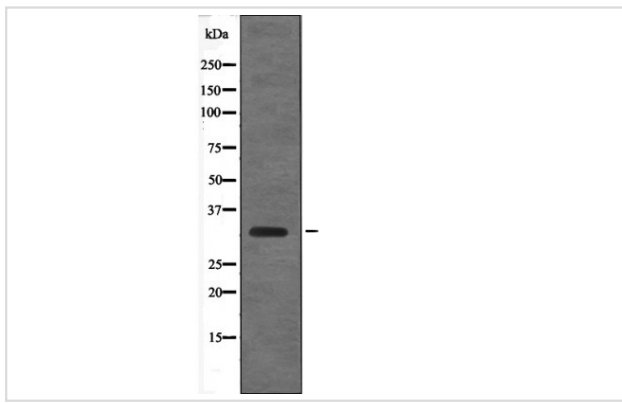
## Description

Product Name	Cyclin D1 (Phospho-Thr288) Antibody
Host Species	Rabbit
Clonality	Polyclonal
Purification	Antibodies were produced by immunizing rabbits with synthetic phosphopeptide and KLH conjugates. Antibodies were purified by affinity-chromatography using epitope-specific phosphopeptide. Non-phospho specific antibodies were removed by chromatography using non-phosphopeptide.
Applications	WB
Species Reactivity	Hu Ms Rt
Specificity	Cyclin D1 (Phospho-Thr288) Antibody detects endogenous levels of Cyclin D1 only when phosphorylated at Thr288
Immunogen Type	Peptide
Immunogen Description	A synthesized peptide derived from human Cyclin D1 (Phospho-Thr288)
Target Name	Cyclin D1
Modification	Phospho
Other Names	CCND1, B-cell lymphoma 1 protein, BCL-1 oncogene, B-cell CLL/lymphoma 1, BCL-1, Cyclin D1, G1/S-specific cyclin-D1, U21B31, PRAD1, BCL1, D11S287E, PRAD1 oncogene
Accession No.	Swiss-Prot#: P24385NCBI Gene ID: 595
Target Species	human
Calculated MW	33kd
Concentration	1.0mg/ml
Formulation	Rabbit IgG in phosphate buffered saline (without Mg <sup>2+</sup> and Ca <sup>2+</sup> ), pH 7.4, 150mM NaCl, 0.02% sodium azide and 50% glycerol.
Storage	Store at -20°C

## Application Details

Western blotting: 1:1000

## Images



Western blot analysis Cyclin D1 (Phospho-Thr288) using EGF treated RAW264.7 whole cell lysates

---

Note: This product is for in vitro research use only and is not intended for use in humans or animals.