

DSCR1 (Phospho-Ser108) Antibody

Catalog No: #12598



Package Size: #12598-1 50ul #12598-2 100ul

Orders: order@signalwayantibody.comSupport: tech@signalwayantibody.com

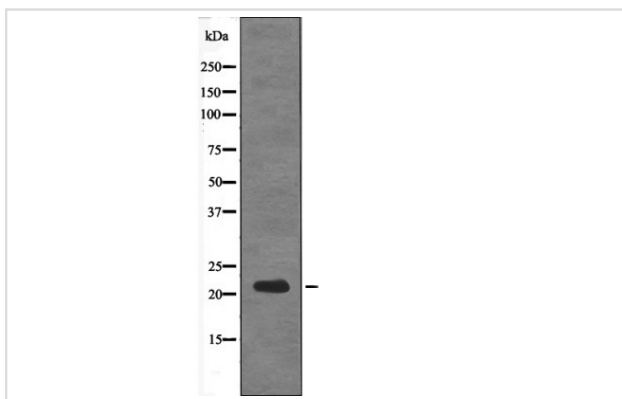
Description

Product Name	DSCR1 (Phospho-Ser108) Antibody
Host Species	Rabbit
Clonality	Polyclonal
Purification	Antibodies were produced by immunizing rabbits with synthetic phosphopeptide and KLH conjugates. Antibodies were purified by affinity-chromatography using epitope-specific phosphopeptide. Non-phospho specific antibodies were removed by chromatography using non-phosphopeptide.
Applications	WB
Species Reactivity	Hu Ms Rt
Specificity	DSCR1 (Phospho-Ser108) Antibody detects endogenous levels of DSCR1 only when phosphorylated at Ser108
Immunogen Type	Peptide
Immunogen Description	A synthesized peptide derived from human DSCR1 (Phospho-Ser108)
Target Name	DSCR1
Modification	Phospho
Other Names	RCAN1, ADAPT78, DSCR1, MCIP1, Regulator of calcineurin 1, Calcipressin-1, CSP1, Near DSCR proline-rich protein
Accession No.	Swiss-Prot#: P53805NCBI Gene ID: 1827
Target Species	human
Calculated MW	22kd
Concentration	1.0mg/ml
Formulation	Rabbit IgG in phosphate buffered saline (without Mg ²⁺ and Ca ²⁺), pH 7.4, 150mM NaCl, 0.02% sodium azide and 50% glycerol.
Storage	Store at -20°C

Application Details

Western blotting: 1:1000

Images



Western blot analysis DSCR1 (Phospho-Ser108) using EGF treated 293 whole cell lysates

Note: This product is for in vitro research use only and is not intended for use in humans or animals.