

## HtrA2 (Phospho-Ser212) Antibody

Catalog No: #12604



Package Size: #12604-1 50ul #12604-2 100ul

Orders: order@signalwayantibody.com

Support: tech@signalwayantibody.com

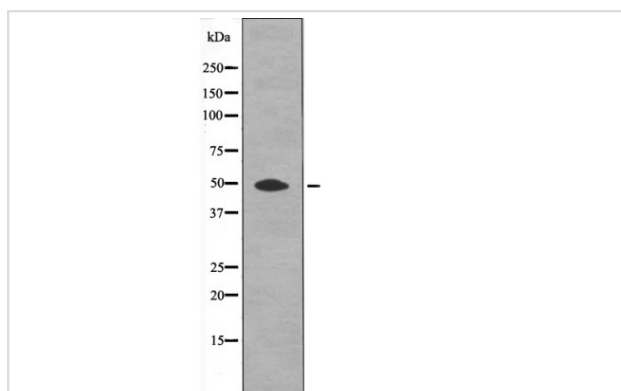
## Description

Product Name	HtrA2 (Phospho-Ser212) Antibody
Host Species	Rabbit
Clonality	Polyclonal
Purification	Antibodies were produced by immunizing rabbits with synthetic phosphopeptide and KLH conjugates. Antibodies were purified by affinity-chromatography using epitope-specific phosphopeptide. Non-phospho specific antibodies were removed by chromatography using non-phosphopeptide.
Applications	WB
Species Reactivity	Hu Ms Rt
Specificity	HtrA2 (Phospho-Ser212) Antibody detects endogenous levels of HtrA2 only when phosphorylated at Ser212
Immunogen Type	Peptide
Immunogen Description	A synthesized peptide derived from human HtrA2 (Phospho-Ser212)
Target Name	HtrA2
Modification	Phospho
Other Names	HTRA2, HtrA-like serine protease, OMI, PARK13, Protease, serine, 25, PRSS25, Serine protease 25, HtrA serine peptidase 2, Serine proteinase OMI
Accession No.	Swiss-Prot#: O43464NCBI Gene ID: 27429
Target Species	human
Calculated MW	49kd
Concentration	1.0mg/ml
Formulation	Rabbit IgG in phosphate buffered saline (without Mg <sup>2+</sup> and Ca <sup>2+</sup> ), pH 7.4, 150mM NaCl, 0.02% sodium azide and 50% glycerol.
Storage	Store at -20°C

## Application Details

Western blotting: 1:1000

## Images



Western blot analysis HtrA2 (Phospho-Ser212) using UV treated A2780 whole cell lysates

---

Note: This product is for in vitro research use only and is not intended for use in humans or animals.