

## MAZ (Phospho-Thr72) Antibody

Catalog No: #12610

Package Size: #12610-1 50ul #12610-2 100ul

Orders: order@signalwayantibody.com

Support: tech@signalwayantibody.com

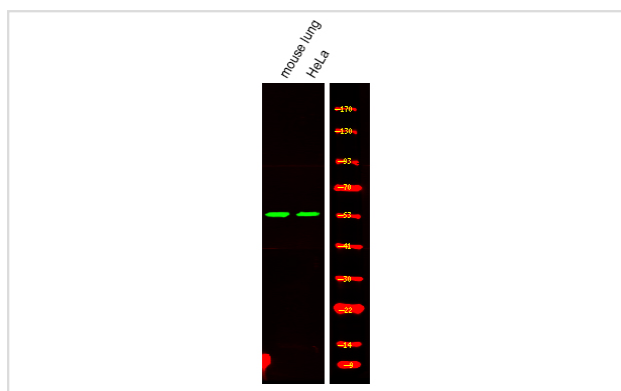
## Description

Product Name	MAZ (Phospho-Thr72) Antibody
Host Species	Rabbit
Clonality	Polyclonal
Purification	Antibodies were produced by immunizing rabbits with synthetic phosphopeptide and KLH conjugates. Antibodies were purified by affinity-chromatography using epitope-specific phosphopeptide. Non-phospho specific antibodies were removed by chromatography using non-phosphopeptide.
Applications	WB
Species Reactivity	Hu Ms Rt
Specificity	MAZ (Phospho-Thr72) Antibody detects endogenous levels of MAZ only when phosphorylated at Thr72
Immunogen Type	Peptide
Immunogen Description	A synthesized peptide derived from human MAZ (Phospho-Thr72)
Target Name	MAZ
Modification	Phospho
Other Names	MAZ, Pur-1, SAF-2, SAF-3, MAZI, ZF87, Zif87, ZNF801, Transcription factor Zif87, Zinc finger protein 801, PUR1, SAF-1
Accession No.	Swiss-Prot#: P56270NCBI Gene ID: 4150
Target Species	human
Calculated MW	48kd
Concentration	1.0mg/ml
Formulation	Rabbit IgG in phosphate buffered saline (without Mg <sup>2+</sup> and Ca <sup>2+</sup> ), pH 7.4, 150mM NaCl, 0.02% sodium azide and 50% glycerol.
Storage	Store at -20°C

## Application Details

Western blotting: 1:1000

## Images



Western Blot analysis of lysates of mouse lung and HeLa, using primary antibody at 1:1000 dilution.

---

Note: This product is for in vitro research use only and is not intended for use in humans or animals.