

## MBP (Phospho-Thr232) Antibody

Catalog No: #12611



Package Size: #12611-1 50ul #12611-2 100ul

Orders: [order@signalwayantibody.com](mailto:order@signalwayantibody.com)Support: [tech@signalwayantibody.com](mailto:tech@signalwayantibody.com)

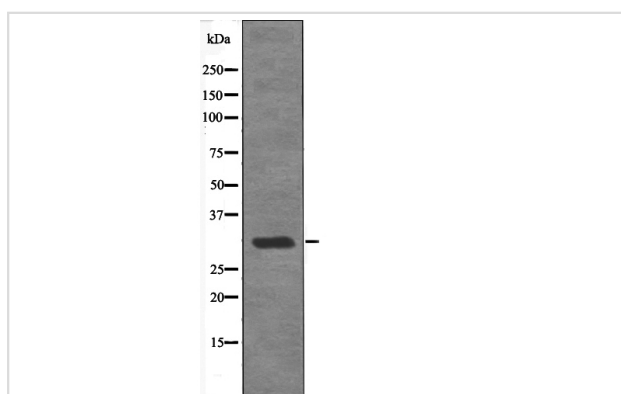
## Description

Product Name	MBP (Phospho-Thr232) Antibody
Host Species	Rabbit
Clonality	Polyclonal
Purification	Antibodies were produced by immunizing rabbits with synthetic phosphopeptide and KLH conjugates. Antibodies were purified by affinity-chromatography using epitope-specific phosphopeptide. Non-phospho specific antibodies were removed by chromatography using non-phosphopeptide.
Applications	WB
Species Reactivity	Hu Ms Rt
Specificity	MBP (Phospho-Thr232) Antibody detects endogenous levels of MBP only when phosphorylated at Thr232
Immunogen Type	Peptide
Immunogen Description	A synthesized peptide derived from human MBP (Phospho-Thr232)
Target Name	MBP
Modification	Phospho
Other Names	MBP, Myelin A1 protein, Myelin basic protein
Accession No.	Swiss-Prot#: P02686NCBI Gene ID: 4155
Target Species	human
Calculated MW	14-33kd
Concentration	1.0mg/ml
Formulation	Rabbit IgG in phosphate buffered saline (without Mg <sup>2+</sup> and Ca <sup>2+</sup> ), pH 7.4, 150mM NaCl, 0.02% sodium azide and 50% glycerol.
Storage	Store at -20°C

## Application Details

Western blotting: 1:1000

## Images



Western blot analysis MBP (Phospho-Thr232) using Mouse brain tissue lysates

---

Note: This product is for in vitro research use only and is not intended for use in humans or animals.