

MCL1 (Phospho-Thr163) Antibody

Catalog No: #12612



Package Size: #12612-1 50ul #12612-2 100ul

Orders: order@signalwayantibody.comSupport: tech@signalwayantibody.com

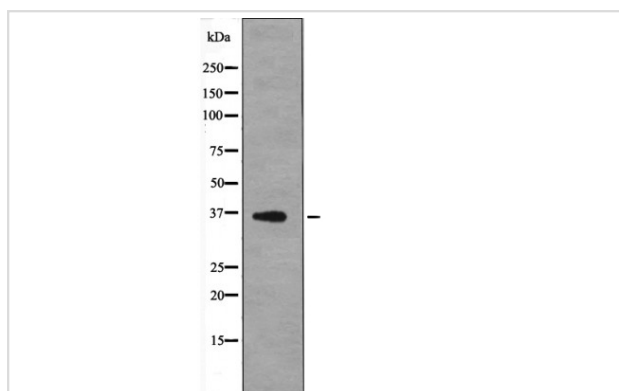
Description

Product Name	MCL1 (Phospho-Thr163) Antibody
Host Species	Rabbit
Clonality	Polyclonal
Purification	Antibodies were produced by immunizing rabbits with synthetic phosphopeptide and KLH conjugates. Antibodies were purified by affinity-chromatography using epitope-specific phosphopeptide. Non-phospho specific antibodies were removed by chromatography using non-phosphopeptide.
Applications	WB
Species Reactivity	Hu Ms Rt
Specificity	MCL1 (Phospho-Thr163) Antibody detects endogenous levels of MCL1 only when phosphorylated at Thr163
Immunogen Type	Peptide
Immunogen Description	A synthesized peptide derived from human MCL1 (Phospho-Thr163)
Target Name	MCL1
Modification	Phospho
Other Names	MCL1, BCL2L3, Bcl-2-like protein 3, Bcl-2-related protein EAT/mcl1, Bcl2-L-3, MCL1S, MCL1L, Myeloid cell leukemia ES, MCL 1, MCL1-ES, TM, EAT, Mcl-1
Accession No.	Swiss-Prot#: Q07820NCBI Gene ID: 4170
Target Species	human
Calculated MW	35kd
Concentration	1.0mg/ml
Formulation	Rabbit IgG in phosphate buffered saline (without Mg ²⁺ and Ca ²⁺), pH 7.4, 150mM NaCl, 0.02% sodium azide and 50% glycerol.
Storage	Store at -20°C

Application Details

Western blotting: 1:1000

Images



Western blot analysis MCL1 (Phospho-Thr163) using PMA treated A549 whole cell lysates

Note: This product is for in vitro research use only and is not intended for use in humans or animals.