

MUC1 (Phospho-Ser1227) Antibody

Catalog No: #12616



Package Size: #12616-1 50ul #12616-2 100ul

Orders: order@signalwayantibody.comSupport: tech@signalwayantibody.com

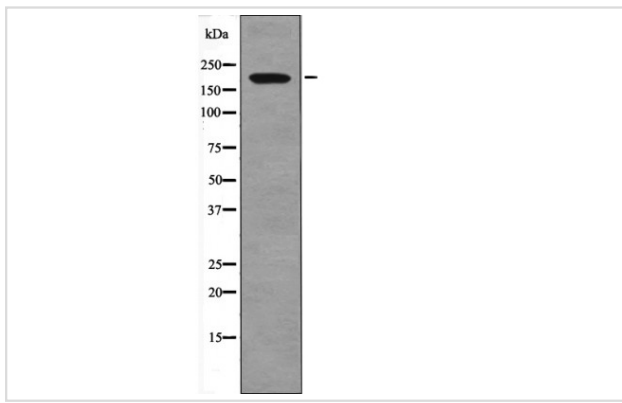
Description

| | |
|-----------------------|---|
| Product Name | MUC1 (Phospho-Ser1227) Antibody |
| Host Species | Rabbit |
| Clonality | Polyclonal |
| Purification | Antibodies were produced by immunizing rabbits with synthetic phosphopeptide and KLH conjugates. Antibodies were purified by affinity-chromatography using epitope-specific phosphopeptide. Non-phospho specific antibodies were removed by chromatography using non-phosphopeptide. |
| Applications | WB |
| Species Reactivity | Hu |
| Specificity | MUC1 (Phospho-Ser1227) Antibody detects endogenous levels of MUC1 only when phosphorylated at Ser1227 |
| Immunogen Type | Peptide |
| Immunogen Description | A synthesized peptide derived from human MUC1 (Phospho-Ser1227) |
| Target Name | MUC1 |
| Modification | Phospho |
| Other Names | MUC1, CA15-3, CD227, Carcinoma-associated mucin, CD227 antigen, DF3 antigen, Episialin, Epithelial membrane antigen, H23 antigen, H23AG, Krebs von den Lungen-6, MAM6, MUC1/ZD, MUC-1/SEC, Mucin-1, Pem, KL-6, MUC-1/X, Tumor-associated mucin, Peanut-rea ... |
| Accession No. | Swiss-Prot#: P15941NCBI Gene ID: 4582 |
| Target Species | human |
| Calculated MW | 170kd |
| Concentration | 1.0mg/ml |
| Formulation | Rabbit IgG in phosphate buffered saline (without Mg ²⁺ and Ca ²⁺), pH 7.4, 150mM NaCl, 0.02% sodium azide and 50% glycerol. |
| Storage | Store at -20°C |

Application Details

Western blotting: 1:1000

Images



Western blot analysis MUC1 (Phospho-Ser1227) using 293 whole cell lysates

Note: This product is for in vitro research use only and is not intended for use in humans or animals.