

## PDX1 (Phospho-Ser61) Antibody

Catalog No: #12625

Package Size: #12625-1 50ul #12625-2 100ul

Orders: [order@signalwayantibody.com](mailto:order@signalwayantibody.com)Support: [tech@signalwayantibody.com](mailto:tech@signalwayantibody.com)

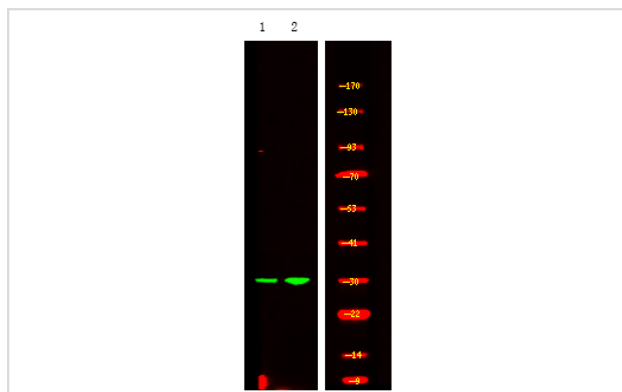
## Description

Product Name	PDX1 (Phospho-Ser61) Antibody
Host Species	Rabbit
Clonality	Polyclonal
Purification	Antibodies were produced by immunizing rabbits with synthetic phosphopeptide and KLH conjugates. Antibodies were purified by affinity-chromatography using epitope-specific phosphopeptide. Non-phospho specific antibodies were removed by chromatography using non-phosphopeptide.
Applications	WB
Species Reactivity	Hu
Specificity	PDX1 (Phospho-Ser61) Antibody detects endogenous levels of PDX1 only when phosphorylated at Ser61
Immunogen Type	Peptide
Immunogen Description	A synthesized peptide derived from human PDX1 (Phospho-Ser61)
Target Name	PDX1
Modification	Phospho
Other Names	PDX1, Glucose-sensitive factor, Insulin upstream factor 1, IPF1, Insulin promoter factor 1, IPF-1, IUF-1, STF-1, GSF, IDX-1, Islet/duodenum homeobox-1, IUF1, MODY4, PDX-1
Accession No.	Swiss-Prot#: P52945NCBI Gene ID: 3651
Target Species	human
Calculated MW	31kd
Concentration	1.0mg/ml
Formulation	Rabbit IgG in phosphate buffered saline (without Mg <sup>2+</sup> and Ca <sup>2+</sup> ), pH 7.4, 150mM NaCl, 0.02% sodium azide and 50% glycerol.
Storage	Store at -20°C

## Application Details

Western blotting: 1:1000

## Images



Western Blot analysis of lysates of 1. HeLa cell and 2. HeLa cell treated with 100ng/mL LPS for 30min, using primary antibody at 1:1000 dilution.

---

Note: This product is for in vitro research use only and is not intended for use in humans or animals.