

Progesterone Receptor (Phospho-Ser345) Antibody

Catalog No: #12628



Package Size: #12628-1 50ul #12628-2 100ul

Orders: order@signalwayantibody.comSupport: tech@signalwayantibody.com

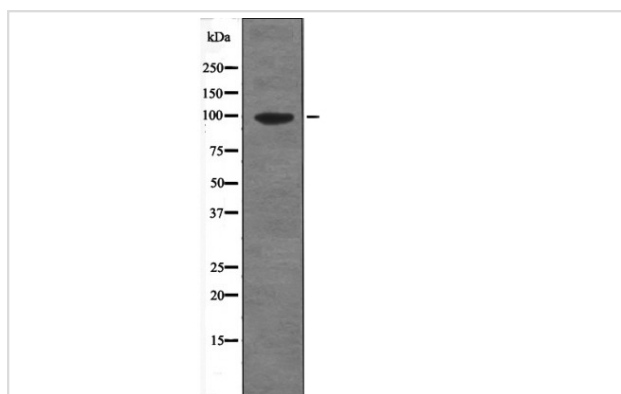
Description

Product Name	Progesterone Receptor (Phospho-Ser345) Antibody
Host Species	Rabbit
Clonality	Polyclonal
Purification	Antibodies were produced by immunizing rabbits with synthetic phosphopeptide and KLH conjugates. Antibodies were purified by affinity-chromatography using epitope-specific phosphopeptide. Non-phospho specific antibodies were removed by chromatography using non-phosphopeptide.
Applications	WB
Species Reactivity	Hu
Specificity	Progesterone Receptor (Phospho-Ser345) Antibody detects endogenous levels of Progesterone Receptor only when phosphorylated at Ser345
Immunogen Type	Peptide
Immunogen Description	A synthesized peptide derived from human Progesterone Receptor (Phospho-Ser345)
Target Name	Progesterone Receptor
Modification	Phospho
Other Names	PGR, NR3C3, PR, Progesterone receptor
Accession No.	Swiss-Prot#: P06401NCBI Gene ID: 5241
Target Species	human
Calculated MW	99kd
Concentration	1.0mg/ml
Formulation	Rabbit IgG in phosphate buffered saline (without Mg ²⁺ and Ca ²⁺), pH 7.4, 150mM NaCl, 0.02% sodium azide and 50% glycerol.
Storage	Store at -20°C

Application Details

Western blotting: 1:1000

Images



Western blot analysis Progesterone Receptor (Phospho-Ser345) using UV treated 293 whole cell lysates

Note: This product is for in vitro research use only and is not intended for use in humans or animals.