

## RAD23 (Phospho-Ser357) Antibody

Catalog No: #12631



Package Size: #12631-1 50ul #12631-2 100ul

Orders: [order@signalwayantibody.com](mailto:order@signalwayantibody.com)Support: [tech@signalwayantibody.com](mailto:tech@signalwayantibody.com)

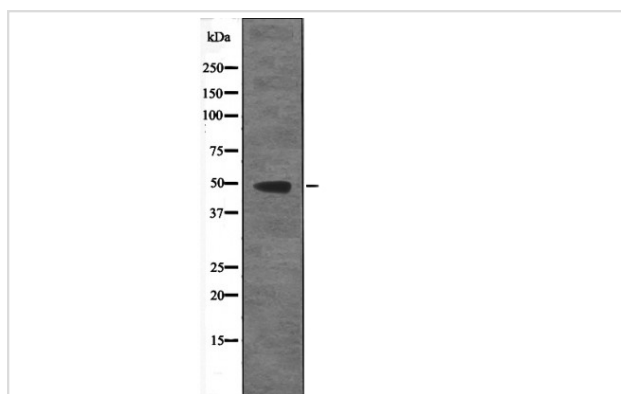
## Description

Product Name	RAD23 (Phospho-Ser357) Antibody
Host Species	Rabbit
Clonality	Polyclonal
Purification	Antibodies were produced by immunizing rabbits with synthetic phosphopeptide and KLH conjugates. Antibodies were purified by affinity-chromatography using epitope-specific phosphopeptide. Non-phospho specific antibodies were removed by chromatography using non-phosphopeptide.
Applications	WB
Species Reactivity	Hu Ms
Specificity	RAD23 (Phospho-Ser357) Antibody detects endogenous levels of RAD23 only when phosphorylated at Ser357
Immunogen Type	Peptide
Immunogen Description	A synthesized peptide derived from human RAD23 (Phospho-Ser357)
Target Name	RAD23
Modification	Phospho
Other Names	RAD23A, HR23A, HHR23A, RAD23, yeast homolog, A
Accession No.	Swiss-Prot#: P54725NCBI Gene ID: 5886
Target Species	human
Calculated MW	48kd
Concentration	1.0mg/ml
Formulation	Rabbit IgG in phosphate buffered saline (without Mg <sup>2+</sup> and Ca <sup>2+</sup> ), pH 7.4, 150mM NaCl, 0.02% sodium azide and 50% glycerol.
Storage	Store at -20°C

## Application Details

Western blotting: 1:1000

## Images



Western blot analysis RAD23 (Phospho-Ser357) using HeLa whole cell lysates

---

Note: This product is for in vitro research use only and is not intended for use in humans or animals.