

SGO1 (Phospho-Ser14) Antibody

Catalog No: #12633



Package Size: #12633-1 50ul #12633-2 100ul

Orders: order@signalwayantibody.comSupport: tech@signalwayantibody.com

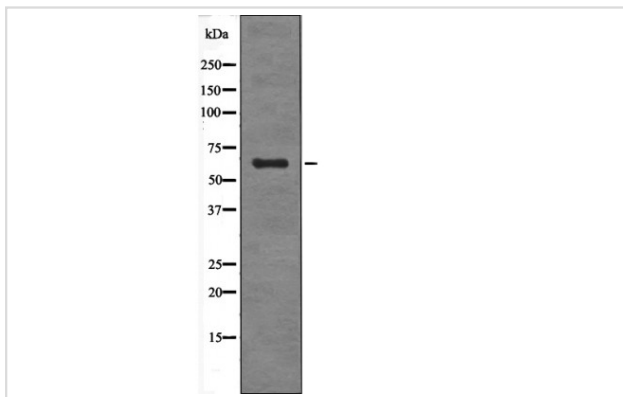
Description

Product Name	SGO1 (Phospho-Ser14) Antibody
Host Species	Rabbit
Clonality	Polyclonal
Purification	Antibodies were produced by immunizing rabbits with synthetic phosphopeptide and KLH conjugates. Antibodies were purified by affinity-chromatography using epitope-specific phosphopeptide. Non-phospho specific antibodies were removed by chromatography using non-phosphopeptide.
Applications	WB
Species Reactivity	Hu
Specificity	SGO1 (Phospho-Ser14) Antibody detects endogenous levels of SGO1 only when phosphorylated at Ser14
Immunogen Type	Peptide
Immunogen Description	A synthesized peptide derived from human SGO1 (Phospho-Ser14)
Target Name	SGO1
Modification	Phospho
Other Names	SGOL1, NY-BR-85, Shugoshin 1CD protein, Shugoshin 1EF protein, Shugoshin-like 1 (S. pombe), SGO, Sgo1, Shugoshin 1AB protein, Shugoshin 1KL protein, Shugoshin-like 1, HSGo1, Shugoshin, Shugoshin 1GH protein
Accession No.	Swiss-Prot#: Q5FBB7NCBI Gene ID: 151648
Target Species	human
Calculated MW	64kd
Concentration	1.0mg/ml
Formulation	Rabbit IgG in phosphate buffered saline (without Mg ²⁺ and Ca ²⁺), pH 7.4, 150mM NaCl, 0.02% sodium azide and 50% glycerol.
Storage	Store at -20°C

Application Details

Western blotting: 1:1000

Images



Western blot analysis SGO1 (Phospho-Ser14) using Adriamycin treated HeLa whole cell lysates

Note: This product is for in vitro research use only and is not intended for use in humans or animals.