

SRC-1 (Phospho-Thr1179) Antibody

Catalog No: #12640



Package Size: #12640-1 50ul #12640-2 100ul

Orders: order@signalwayantibody.comSupport: tech@signalwayantibody.com

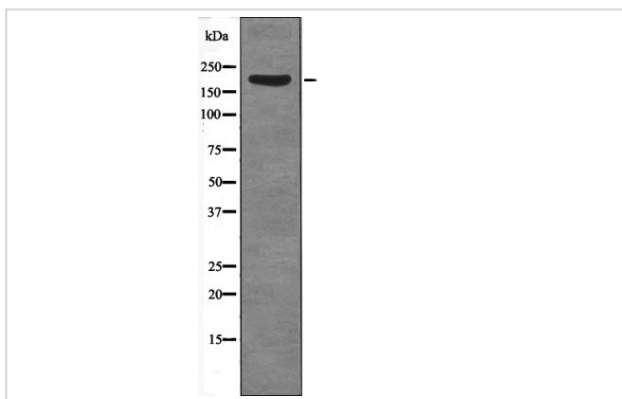
Description

Product Name	SRC-1 (Phospho-Thr1179) Antibody
Host Species	Rabbit
Clonality	Polyclonal
Purification	Antibodies were produced by immunizing rabbits with synthetic phosphopeptide and KLH conjugates. Antibodies were purified by affinity-chromatography using epitope-specific phosphopeptide. Non-phospho specific antibodies were removed by chromatography using non-phosphopeptide.
Applications	WB
Species Reactivity	Hu Ms
Specificity	SRC-1 (Phospho-Thr1179) Antibody detects endogenous levels of SRC-1 only when phosphorylated at Thr1179
Immunogen Type	Peptide
Immunogen Description	A synthesized peptide derived from human SRC-1 (Phospho-Thr1179)
Target Name	SRC-1
Modification	Phospho
Other Names	NCOA1, BHLHe42, BHLHe74, F-SRC-1, Hin-2 protein, Nuclear receptor coactivator 1, PAX3/NCOA1 fusion protein, KAT13A, Protein Hin-2, Steroid receptor coactivator 1, Steroid receptor coactivator-1, NCoA-1, RIP160, SRC-1, SRC1
Accession No.	Swiss-Prot#: Q15788NCBI Gene ID: 8648
Target Species	human
Calculated MW	200kd
Concentration	1.0mg/ml
Formulation	Rabbit IgG in phosphate buffered saline (without Mg ²⁺ and Ca ²⁺), pH 7.4, 150mM NaCl, 0.02% sodium azide and 50% glycerol.
Storage	Store at -20°C

Application Details

Western blotting: 1:1000

Images



Western blot analysis SRC-1 (Phospho-Thr1179) using Jurkat whole cell lysates

Note: This product is for in vitro research use only and is not intended for use in humans or animals.