

STF-1 (Phospho-Ser203) Antibody

Catalog No: #12643



Package Size: #12643-1 50ul #12643-2 100ul

Orders: order@signalwayantibody.comSupport: tech@signalwayantibody.com

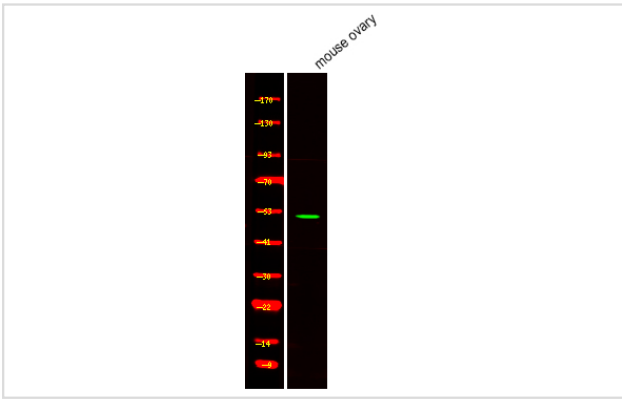
Description

Product Name	STF-1 (Phospho-Ser203) Antibody
Host Species	Rabbit
Clonality	Polyclonal
Purification	Antibodies were produced by immunizing rabbits with synthetic phosphopeptide and KLH conjugates. Antibodies were purified by affinity-chromatography using epitope-specific phosphopeptide. Non-phospho specific antibodies were removed by chromatography using non-phosphopeptide.
Applications	WB
Species Reactivity	Hu Ms Rt
Specificity	STF-1 (Phospho-Ser203) Antibody detects endogenous levels of STF-1 only when phosphorylated at Ser203
Immunogen Type	Peptide
Immunogen Description	A synthesized peptide derived from human STF-1 (Phospho-Ser203)
Target Name	STF-1
Modification	Phospho
Other Names	NR5A1, AD4BP, Adrenal 4 binding protein, Adrenal 4-binding protein, ELP, Steroidogenic factor-1, SRXY3, Steroidogenic factor 1, Nuclear receptor AdBP4, Nuclear receptor elp, POF7, SF-1, SPGF8, Steroid hormone receptor Ad4BP, STF-1, FTZ1, FTZF1, Fushi ...
Accession No.	Swiss-Prot#: Q13285NCBI Gene ID: 2516
Target Species	human
Calculated MW	51kd
Concentration	1.0mg/ml
Formulation	Rabbit IgG in phosphate buffered saline (without Mg ²⁺ and Ca ²⁺), pH 7.4, 150mM NaCl, 0.02% sodium azide and 50% glycerol.
Storage	Store at -20°C

Application Details

Western blotting: 1:1000

Images



Western Blot analysis of lysates of mouse ovary, using primary antibody at 1:1000 dilution.

Note: This product is for in vitro research use only and is not intended for use in humans or animals.