

TAB1 (Phospho-Ser438) Antibody

Catalog No: #12645

Package Size: #12645-1 50ul #12645-2 100ul

Orders: order@signalwayantibody.comSupport: tech@signalwayantibody.com

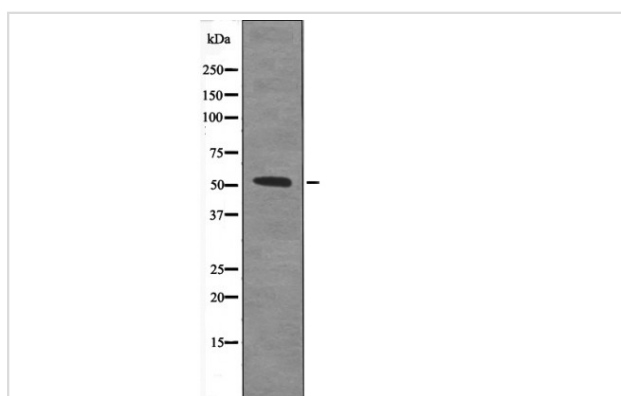
Description

Product Name	TAB1 (Phospho-Ser438) Antibody
Host Species	Rabbit
Clonality	Polyclonal
Purification	Antibodies were produced by immunizing rabbits with synthetic phosphopeptide and KLH conjugates. Antibodies were purified by affinity-chromatography using epitope-specific phosphopeptide. Non-phospho specific antibodies were removed by chromatography using non-phosphopeptide.
Applications	WB
Species Reactivity	Hu Ms
Specificity	TAB1 (Phospho-Ser438) Antibody detects endogenous levels of TAB1 only when phosphorylated at Ser438
Immunogen Type	Peptide
Immunogen Description	A synthesized peptide derived from human TAB1 (Phospho-Ser438)
Target Name	TAB1
Modification	Phospho
Other Names	TAB1, 3'-Tab1, 3-Tab1, MAP3K7IP1, TAK1-binding protein 1
Accession No.	Swiss-Prot#: Q15750NCBI Gene ID: 10454
Target Species	human
Calculated MW	55kd
Concentration	1.0mg/ml
Formulation	Rabbit IgG in phosphate buffered saline (without Mg ²⁺ and Ca ²⁺), pH 7.4, 150mM NaCl, 0.02% sodium azide and 50% glycerol.
Storage	Store at -20°C

Application Details

Western blotting: 1:1000

Images



Western blot analysis TAB1 (Phospho-Ser438) using UV treated NIH-3T3 whole cell lysates

Note: This product is for in vitro research use only and is not intended for use in humans or animals.