

Tel (Phospho-Ser257) Antibody

Catalog No: #12646



Package Size: #12646-1 50ul #12646-2 100ul

Orders: order@signalwayantibody.comSupport: tech@signalwayantibody.com

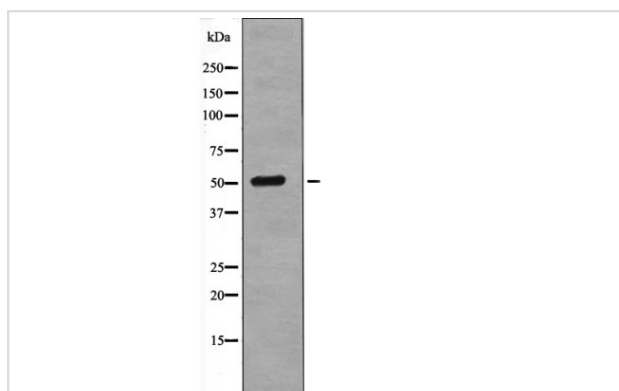
Description

| | |
|-----------------------|--|
| Product Name | Tel (Phospho-Ser257) Antibody |
| Host Species | Rabbit |
| Clonality | Polyclonal |
| Purification | Antibodies were produced by immunizing rabbits with synthetic phosphopeptide and KLH conjugates. Antibodies were purified by affinity-chromatography using epitope-specific phosphopeptide. Non-phospho specific antibodies were removed by chromatography using non-phosphopeptide. |
| Applications | WB |
| Species Reactivity | Hu |
| Specificity | Tel (Phospho-Ser257) Antibody detects endogenous levels of Tel only when phosphorylated at Ser257 |
| Immunogen Type | Peptide |
| Immunogen Description | A synthesized peptide derived from human Tel (Phospho-Ser257) |
| Target Name | Tel |
| Modification | Phospho |
| Other Names | ETV6, ETS translocation variant 6, Ets variant gene 6, ETS-related protein Tel1, TEL/ABL, TEL1 oncogene, Transcription factor ETV6, Ets variant 6, TEL, TEL1 |
| Accession No. | Swiss-Prot#: P41212NCBI Gene ID: 2120 |
| Target Species | human |
| Calculated MW | 53kd |
| Concentration | 1.0mg/ml |
| Formulation | Rabbit IgG in phosphate buffered saline (without Mg ²⁺ and Ca ²⁺), pH 7.4, 150mM NaCl, 0.02% sodium azide and 50% glycerol. |
| Storage | Store at -20°C |

Application Details

Western blotting: 1:1000

Images



Western blot analysis Tel (Phospho-Ser257) using NIH-3T3 whole cell lysates

Note: This product is for in vitro research use only and is not intended for use in humans or animals.