

TPPP (Phospho-Ser18) Antibody

Catalog No: #12649

Package Size: #12649-1 50ul #12649-2 100ul

Orders: order@signalwayantibody.com

Support: tech@signalwayantibody.com

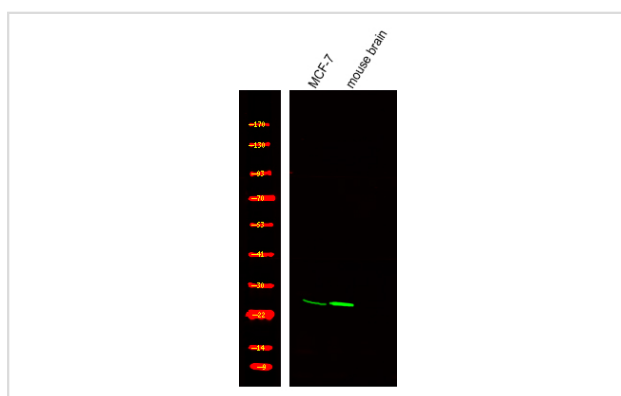
Description

Product Name	TPPP (Phospho-Ser18) Antibody
Host Species	Rabbit
Clonality	Polyclonal
Purification	Antibodies were produced by immunizing rabbits with synthetic phosphopeptide and KLH conjugates. Antibodies were purified by affinity-chromatography using epitope-specific phosphopeptide. Non-phospho specific antibodies were removed by chromatography using non-phosphopeptide.
Applications	WB
Species Reactivity	Hu Ms Rt
Specificity	TPPP (Phospho-Ser18) Antibody detects endogenous levels of TPPP only when phosphorylated at Ser18
Immunogen Type	Peptide
Immunogen Description	A synthesized peptide derived from human TPPP (Phospho-Ser18)
Target Name	TPPP
Modification	Phospho
Other Names	TPPP, 25 kDa brain-specific protein, p25-alpha, p25, p25alpha, p24, TPPP1
Accession No.	Swiss-Prot#: O94811NCBI Gene ID: 11076
Target Species	human
Calculated MW	24kd
Concentration	1.0mg/ml
Formulation	Rabbit IgG in phosphate buffered saline (without Mg ²⁺ and Ca ²⁺), pH 7.4, 150mM NaCl, 0.02% sodium azide and 50% glycerol.
Storage	Store at -20°C

Application Details

Western blotting: 1:1000

Images



Western Blot analysis of lysates of MCF-7 and mouse brain, using primary antibody at 1:1000 dilution.

Note: This product is for in vitro research use only and is not intended for use in humans or animals.