

Cyclin E1 (Phospho-Ser399) Antibody

Catalog No: #12659



Package Size: #12659-1 50ul #12659-2 100ul

Orders: order@signalwayantibody.com

Support: tech@signalwayantibody.com

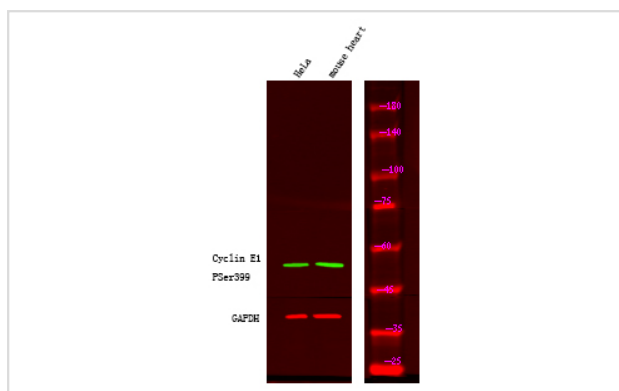
Description

Product Name	Cyclin E1 (Phospho-Ser399) Antibody
Host Species	Rabbit
Clonality	Polyclonal
Purification	Antibodies were produced by immunizing rabbits with synthetic phosphopeptide and KLH conjugates. Antibodies were purified by affinity-chromatography using epitope-specific phosphopeptide. Non-phospho specific antibodies were removed by chromatography using non-phosphopeptide.
Applications	WB
Species Reactivity	Hu
Specificity	Cyclin E1 (Phospho-Ser399) Antibody detects endogenous levels of Cyclin E1 only when phosphorylated at Ser399
Immunogen Type	Peptide
Immunogen Description	A synthesized peptide derived from human Cyclin E1 (Phospho-Ser399)
Target Name	Cyclin E1
Modification	Phospho
Other Names	CCNE1, Cyclin E1, CCNE, Cyclin Es, Cyclin Et, G1/S-specific cyclin-E1, G1/s-specific cyclin e, Cyclin E
Accession No.	Swiss-Prot#: P24864NCBI Gene ID: 898
Target Species	human
Calculated MW	49kd
Concentration	1.0mg/ml
Formulation	Rabbit IgG in phosphate buffered saline (without Mg ²⁺ and Ca ²⁺), pH 7.4, 150mM NaCl, 0.02% sodium azide and 50% glycerol.
Storage	Store at -20°C

Application Details

Western blotting: 1:1000

Images



Western Blot analysis of lysates of HeLa cell and mouse heart, using primary antibody at 1:1000 dilution.

Note: This product is for in vitro research use only and is not intended for use in humans or animals.