

POLR2A (Phospho-Ser1616) Antibody

Catalog No: #12664



Package Size: #12664-1 50ul #12664-2 100ul

Orders: order@signalwayantibody.comSupport: tech@signalwayantibody.com

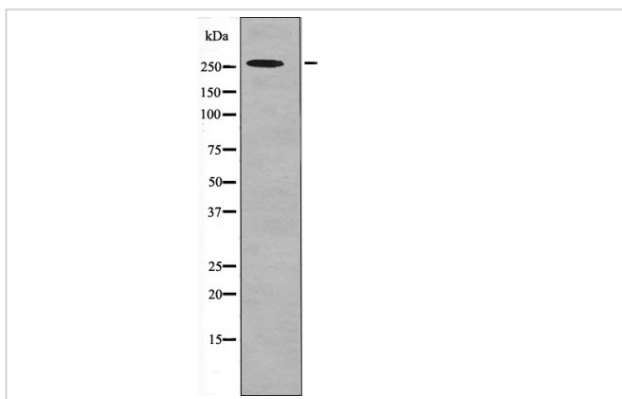
Description

Product Name	POLR2A (Phospho-Ser1616) Antibody
Host Species	Rabbit
Clonality	Polyclonal
Purification	Antibodies were produced by immunizing rabbits with synthetic phosphopeptide and KLH conjugates. Antibodies were purified by affinity-chromatography using epitope-specific phosphopeptide. Non-phospho specific antibodies were removed by chromatography using non-phosphopeptide.
Applications	WB
Species Reactivity	Hu Ms
Specificity	POLR2A (Phospho-Ser1616) Antibody detects endogenous levels of POLR2A only when phosphorylated at Ser1616
Immunogen Type	Peptide
Immunogen Description	A synthesized peptide derived from human POLR2A (Phospho-Ser1616)
Target Name	POLR2A
Modification	Phospho
Other Names	POLR2A, HRPB220, HsRPB1, POLR2, RplILS, RPOL2, RNA Polymerase II, RPO2, POLRA, RNA polymerase II subunit B1, RPB1, RPBh1
Accession No.	Swiss-Prot#: P24928NCBI Gene ID: 5430
Target Species	human
Calculated MW	270kd
Concentration	1.0mg/ml
Formulation	Rabbit IgG in phosphate buffered saline (without Mg ²⁺ and Ca ²⁺), pH 7.4, 150mM NaCl, 0.02% sodium azide and 50% glycerol.
Storage	Store at -20°C

Application Details

Western blotting: 1:1000

Images



Western blot analysis POLR2A (Phospho-Ser1616) using Forskolin treated 293 whole cell lysates

Note: This product is for in vitro research use only and is not intended for use in humans or animals.