

PRK1/2 (Phospho-Thr774/816) Antibody

Catalog No: #12665



Package Size: #12665-1 50ul #12665-2 100ul

Orders: order@signalwayantibody.comSupport: tech@signalwayantibody.com

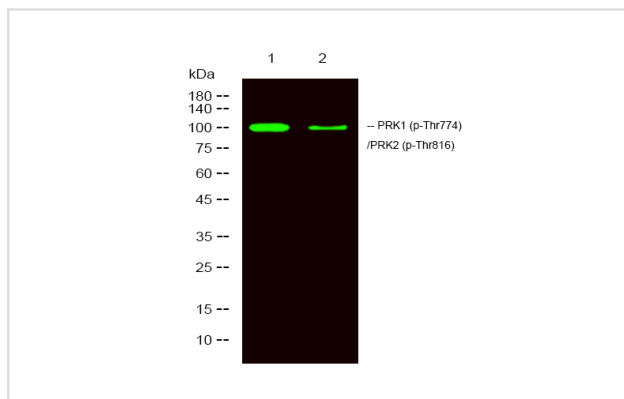
Description

Product Name	PRK1/2 (Phospho-Thr774/816) Antibody
Host Species	Rabbit
Clonality	Polyclonal
Purification	Antibodies were produced by immunizing rabbits with synthetic phosphopeptide and KLH conjugates. Antibodies were purified by affinity-chromatography using epitope-specific phosphopeptide. Non-phospho specific antibodies were removed by chromatography using non-phosphopeptide.
Applications	WB
Species Reactivity	Hu
Specificity	PRK1/2 (Phospho-Thr774/816) Antibody detects endogenous levels of PRK1/2 only when phosphorylated at Thr774/816
Immunogen Type	Peptide
Immunogen Description	A synthesized peptide derived from human PRK1/2 (Phospho-Thr774/816)
Target Name	PRK1/2
Modification	Phospho
Other Names	PKN1, PKN, Protein kinase C-like PKN, Protein kinase N1, PRK1, PRKCL1, Serine-threonine kinase N, Pknalpha, Protease-activated kinase 1, Protein kinase PKN-alpha, DBK, PAK-1, PKN-ALPHA, Protein kinase C-like 1
Accession No.	Swiss-Prot#: Q16512/Q16513NCBI Gene ID: 5585/5586
Target Species	human
Calculated MW	104kd
Concentration	1.0mg/ml
Formulation	Rabbit IgG in phosphate buffered saline (without Mg ²⁺ and Ca ²⁺), pH 7.4, 150mM NaCl, 0.02% sodium azide and 50% glycerol.
Storage	Store at -20°C

Application Details

Western blotting: 1:1000

Images



Western Blot analysis of lysates of 1. NIH/3T3 treated with LPS and 2. NIH/3T3, using primary antibody at 1:1000 dilution.

Note: This product is for in vitro research use only and is not intended for use in humans or animals.