

AKT1 (Phospho-Ser473+Tyr474) Antibody

Catalog No: #12669



Package Size: #12669-1 50ul #12669-2 100ul

Orders: order@signalwayantibody.comSupport: tech@signalwayantibody.com

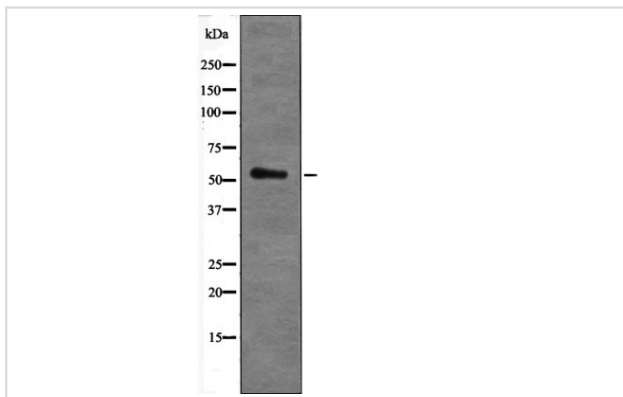
Description

Product Name	AKT1 (Phospho-Ser473+Tyr474) Antibody
Host Species	Rabbit
Clonality	Polyclonal
Purification	Antibodies were produced by immunizing rabbits with synthetic phosphopeptide and KLH conjugates. Antibodies were purified by affinity-chromatography using epitope-specific phosphopeptide. Non-phospho specific antibodies were removed by chromatography using non-phosphopeptide.
Applications	WB
Species Reactivity	Hu
Specificity	AKT1 (Phospho-Ser473+Tyr474) Antibody detects endogenous levels of AKT1 only when phosphorylated at Ser473+Tyr474
Immunogen Type	Peptide
Immunogen Description	A synthesized peptide derived from human AKT1 (Phospho-Ser473+Tyr474)
Target Name	AKT1
Modification	Phospho
Other Names	AKT1, AKT, AKT-1, C-AKT, Pan-AKT, PKB alpha, PKBalpha, Proto-oncogene c-Akt, Protein kinase B, Rac protein kinase alpha, PRKBA, Protein kinase B alpha, RAC-PK-alpha, PKB, PKB-ALPHA, RAC, RAC-ALPHA
Accession No.	Swiss-Prot#: P31749NCBI Gene ID: 207
Target Species	human
Calculated MW	60kd
Concentration	1.0mg/ml
Formulation	Rabbit IgG in phosphate buffered saline (without Mg ²⁺ and Ca ²⁺), pH 7.4, 150mM NaCl, 0.02% sodium azide and 50% glycerol.
Storage	Store at -20°C

Application Details

Western blotting: 1:1000

Images



Western blot analysis AKT1 (Phospho-Ser473+Tyr474) using K562 whole cell lysates

Note: This product is for in vitro research use only and is not intended for use in humans or animals.