

## C5AR1 (Phospho-Ser334) Antibody

Catalog No: #12673



Package Size: #12673-1 50ul #12673-2 100ul

Orders: [order@signalwayantibody.com](mailto:order@signalwayantibody.com)Support: [tech@signalwayantibody.com](mailto:tech@signalwayantibody.com)

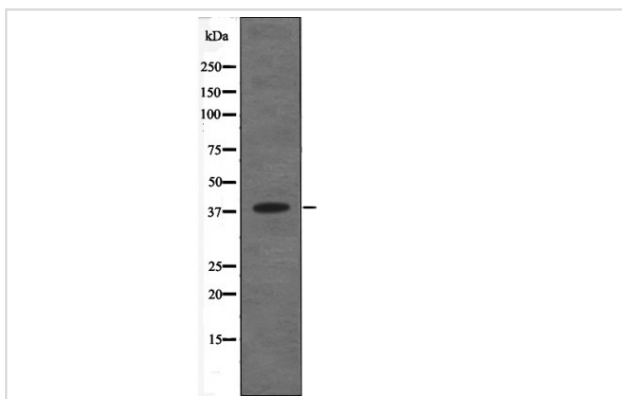
## Description

Product Name	C5AR1 (Phospho-Ser334) Antibody
Host Species	Rabbit
Clonality	Polyclonal
Purification	Antibodies were produced by immunizing rabbits with synthetic phosphopeptide and KLH conjugates. Antibodies were purified by affinity-chromatography using epitope-specific phosphopeptide. Non-phospho specific antibodies were removed by chromatography using non-phosphopeptide.
Applications	WB
Species Reactivity	Hu Rt
Specificity	C5AR1 (Phospho-Ser334) Antibody detects endogenous levels of C5AR1 only when phosphorylated at Ser334
Immunogen Type	Peptide
Immunogen Description	A synthesized peptide derived from human C5AR1 (Phospho-Ser334)
Target Name	C5AR1
Modification	Phospho
Other Names	C5AR1, C5A, C5a-R, C5a ligand, C5a receptor, CD88, C5a anaphylatoxin receptor, C5AR, C5R1, CD88 antigen
Accession No.	Swiss-Prot#: P21730NCBI Gene ID: 728
Target Species	human
Calculated MW	39kd
Concentration	1.0mg/ml
Formulation	Rabbit IgG in phosphate buffered saline (without Mg <sup>2+</sup> and Ca <sup>2+</sup> ), pH 7.4, 150mM NaCl, 0.02% sodium azide and 50% glycerol.
Storage	Store at -20°C

## Application Details

Western blotting: 1:1000

## Images



Western blot analysis C5AR1 (Phospho-Ser334) using nocodazole treated COS7 whole cell lysates

---

Note: This product is for in vitro research use only and is not intended for use in humans or animals.