

## Caspase 3 (Phospho-Ser26) Antibody

Catalog No: #12675



Package Size: #12675-1 50ul #12675-2 100ul

Orders: [order@signalwayantibody.com](mailto:order@signalwayantibody.com)Support: [tech@signalwayantibody.com](mailto:tech@signalwayantibody.com)

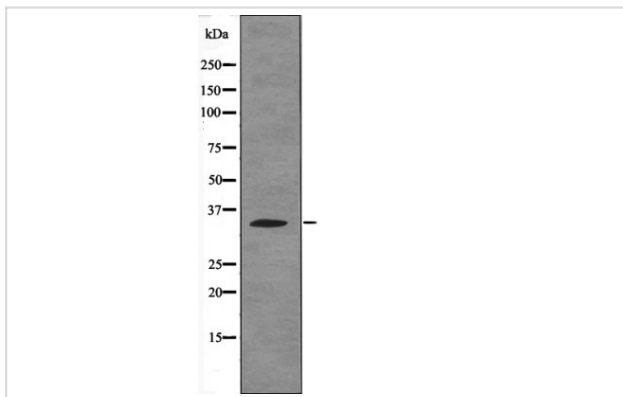
## Description

Product Name	Caspase 3 (Phospho-Ser26) Antibody
Host Species	Rabbit
Clonality	Polyclonal
Purification	Antibodies were produced by immunizing rabbits with synthetic phosphopeptide and KLH conjugates. Antibodies were purified by affinity-chromatography using epitope-specific phosphopeptide. Non-phospho specific antibodies were removed by chromatography using non-phosphopeptide.
Applications	WB
Species Reactivity	Ms Rt
Specificity	Caspase 3 (Phospho-Ser26) Antibody detects endogenous levels of Caspase 3 only when phosphorylated at Ser26
Immunogen Type	Peptide
Immunogen Description	A synthesized peptide derived from human Caspase 3 (Phospho-Ser26)
Target Name	Caspase 3
Modification	Phospho
Other Names	CASP3, Apopain, CASP-3, Caspase-3, CPP32B, CPP32, Cysteine protease CPP32, SCA-1, SREBP cleavage activity 1, Yama, Procaspase3, Caspase 3, CPP-32, PARP cleavage protease, Protein Yama
Accession No.	Swiss-Prot#: P42574NCBI Gene ID: 836
Target Species	human
Calculated MW	34kd
Concentration	1.0mg/ml
Formulation	Rabbit IgG in phosphate buffered saline (without Mg <sup>2+</sup> and Ca <sup>2+</sup> ), pH 7.4, 150mM NaCl, 0.02% sodium azide and 50% glycerol.
Storage	Store at -20°C

## Application Details

Western blotting: 1:1000

## Images



Western blot analysis Caspase 3 (Phospho-Ser26) using P  
Rat kidneytissue lysates

---

Note: This product is for in vitro research use only and is not intended for use in humans or animals.