

CDH1 (Phospho-Ser844) Antibody

Catalog No: #12676

Package Size: #12676-1 50ul #12676-2 100ul

Orders: order@signalwayantibody.comSupport: tech@signalwayantibody.com

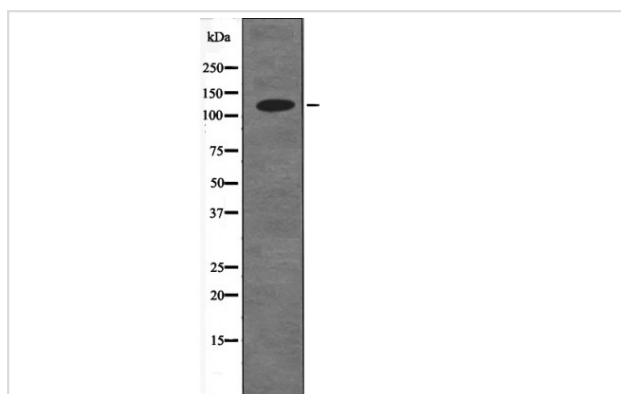
Description

Product Name	CDH1 (Phospho-Ser844) Antibody
Host Species	Rabbit
Clonality	Polyclonal
Purification	Antibodies were produced by immunizing rabbits with synthetic phosphopeptide and KLH conjugates. Antibodies were purified by affinity-chromatography using epitope-specific phosphopeptide. Non-phospho specific antibodies were removed by chromatography using non-phosphopeptide.
Applications	WB
Species Reactivity	Hu Ms Rt
Specificity	CDH1 (Phospho-Ser844) Antibody detects endogenous levels of CDH1 only when phosphorylated at Ser844
Immunogen Type	Peptide
Immunogen Description	A synthesized peptide derived from human CDH1 (Phospho-Ser844)
Target Name	CDH1
Modification	Phospho
Other Names	CDH1, CD324, CDHE, Cell-CAM 120/80, E Cadherin, E-Cadherin, ECAD, Epithelial cadherin, Arc-1, UVO, Cadherin-1, CAM 120/80, CD324 antigen, LCAM, Uvomorulin
Accession No.	Swiss-Prot#: P12830NCBI Gene ID: 999
Target Species	human
Calculated MW	120kd
Concentration	1.0mg/ml
Formulation	Rabbit IgG in phosphate buffered saline (without Mg ²⁺ and Ca ²⁺), pH 7.4, 150mM NaCl, 0.02% sodium azide and 50% glycerol.
Storage	Store at -20°C

Application Details

Western blotting: 1:1000

Images



Western blot analysis CDH1 (Phospho-Ser844) using PI3-kinase H₂O₂ treated COS7 whole cell lysates

Note: This product is for in vitro research use only and is not intended for use in humans or animals.