

## DDEF2 (Phospho-Ser701) Antibody

Catalog No: #12678



Package Size: #12678-1 50ul #12678-2 100ul

Orders: [order@signalwayantibody.com](mailto:order@signalwayantibody.com)Support: [tech@signalwayantibody.com](mailto:tech@signalwayantibody.com)

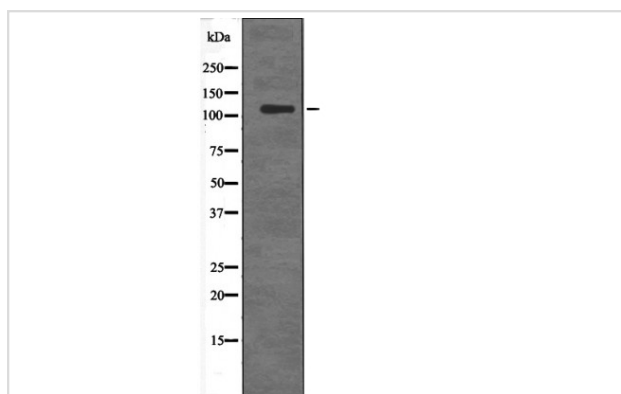
## Description

Product Name	DDEF2 (Phospho-Ser701) Antibody
Host Species	Rabbit
Clonality	Polyclonal
Purification	Antibodies were produced by immunizing rabbits with synthetic phosphopeptide and KLH conjugates. Antibodies were purified by affinity-chromatography using epitope-specific phosphopeptide. Non-phospho specific antibodies were removed by chromatography using non-phosphopeptide.
Applications	WB
Species Reactivity	Hu Ms
Specificity	DDEF2 (Phospho-Ser701) Antibody detects endogenous levels of DDEF2 only when phosphorylated at Ser701
Immunogen Type	Peptide
Immunogen Description	A synthesized peptide derived from human DDEF2 (Phospho-Ser701)
Target Name	DDEF2
Modification	Phospho
Other Names	ASAP2, AMAP2, Centaurin, beta 3, DDEF2, CENTB3, PAP, KIAA0400, SHAG1, PAG3, PAP-alpha
Accession No.	Swiss-Prot#: O43150NCBI Gene ID: 8853
Target Species	human
Calculated MW	112kd
Concentration	1.0mg/ml
Formulation	Rabbit IgG in phosphate buffered saline (without Mg <sup>2+</sup> and Ca <sup>2+</sup> ), pH 7.4, 150mM NaCl, 0.02% sodium azide and 50% glycerol.
Storage	Store at -20°C

## Application Details

Western blotting: 1:1000

## Images



Western blot analysis DDEF2 (Phospho-Ser701) using EGF treated RAW264.7 whole cell lysates

---

Note: This product is for in vitro research use only and is not intended for use in humans or animals.