

ETS1 (Phospho-Ser251) Antibody

Catalog No: #12680



Package Size: #12680-1 50ul #12680-2 100ul

Orders: order@signalwayantibody.comSupport: tech@signalwayantibody.com

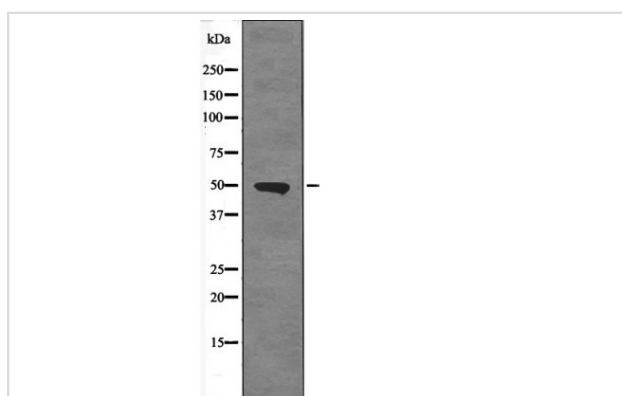
Description

Product Name	ETS1 (Phospho-Ser251) Antibody
Host Species	Rabbit
Clonality	Polyclonal
Purification	Antibodies were produced by immunizing rabbits with synthetic phosphopeptide and KLH conjugates. Antibodies were purified by affinity-chromatography using epitope-specific phosphopeptide. Non-phospho specific antibodies were removed by chromatography using non-phosphopeptide.
Applications	WB
Species Reactivity	Hu Ms Rt
Specificity	ETS1 (Phospho-Ser251) Antibody detects endogenous levels of ETS1 only when phosphorylated at Ser251
Immunogen Type	Peptide
Immunogen Description	A synthesized peptide derived from human ETS1 (Phospho-Ser251)
Target Name	ETS1
Modification	Phospho
Other Names	ETS1, Ets protein, ETS-1, EWSR2, p54, Protein C-ets-1
Accession No.	Swiss-Prot#: P14921NCBI Gene ID: 2113
Target Species	human
Calculated MW	50kd
Concentration	1.0mg/ml
Formulation	Rabbit IgG in phosphate buffered saline (without Mg ²⁺ and Ca ²⁺), pH 7.4, 150mM NaCl, 0.02% sodium azide and 50% glycerol.
Storage	Store at -20°C

Application Details

Western blotting: 1:1000

Images



Western blot analysis ETS1 (Phospho-Ser251) using HepG2 whole cell lysates

Note: This product is for in vitro research use only and is not intended for use in humans or animals.