

## EPHA1 (Phospho-Tyr605) Antibody

Catalog No: #12710



Package Size: #12710-1 50ul #12710-2 100ul

Orders: [order@signalwayantibody.com](mailto:order@signalwayantibody.com)Support: [tech@signalwayantibody.com](mailto:tech@signalwayantibody.com)

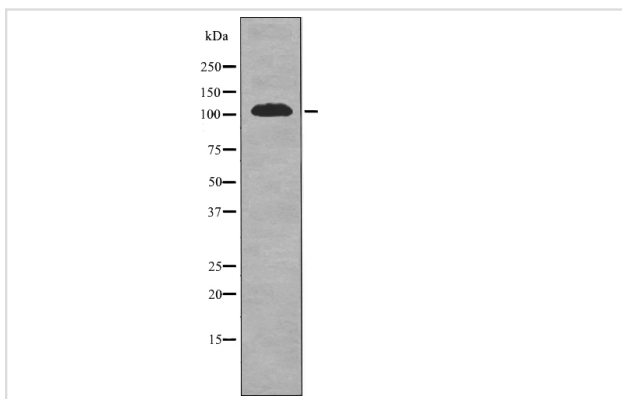
## Description

Product Name	EPHA1 (Phospho-Tyr605) Antibody
Host Species	Rabbit
Clonality	Polyclonal
Purification	Antibodies were produced by immunizing rabbits with synthetic phosphopeptide and KLH conjugates. Antibodies were purified by affinity-chromatography using epitope-specific phosphopeptide. Non-phospho specific antibodies were removed by chromatography using non-phosphopeptide.
Applications	WB
Species Reactivity	Hu Ms
Specificity	EPHA1 (Phospho-Tyr605) Antibody detects endogenous levels of EPHA1 only when phosphorylated at Tyr605
Immunogen Type	Peptide
Immunogen Description	A synthesized peptide derived from human EPHA1 (Phospho-Tyr605)
Target Name	EPHA1
Modification	Phospho
Other Names	EPHA1, EPH receptor A1, Ephrin type-A receptor 1, EPHT, ESK, EPH tyrosine kinase 1, HEpha1, Oncogene EPH, Soluble EPHA1 variant 1, Soluble EPHA1 variant 2, EPH tyrosine kinase, EPHT1
Accession No.	Swiss-Prot#: P21709NCBI Gene ID: 2041
Target Species	human
Calculated MW	108kd
Concentration	1.0mg/ml
Formulation	Rabbit IgG in phosphate buffered saline (without Mg <sup>2+</sup> and Ca <sup>2+</sup> ), pH 7.4, 150mM NaCl, 0.02% sodium azide and 50% glycerol.
Storage	Store at -20°C

## Application Details

Western blotting: 1:1000

## Images



Western blot analysis EPHA1 (Phospho-Tyr605) using IL-4 treated HeLa whole cell lysates

---

Note: This product is for in vitro research use only and is not intended for use in humans or animals.