

EPHA3 (Phospho-Tyr602) Antibody

Catalog No: #12713



Package Size: #12713-1 50ul #12713-2 100ul

Orders: order@signalwayantibody.comSupport: tech@signalwayantibody.com

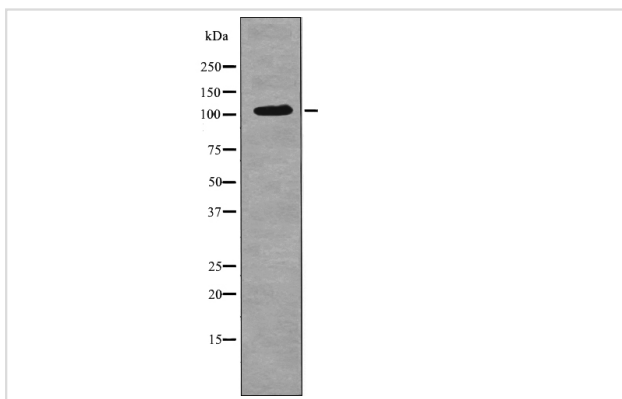
Description

Product Name	EPHA3 (Phospho-Tyr602) Antibody
Host Species	Rabbit
Clonality	Polyclonal
Purification	Antibodies were produced by immunizing rabbits with synthetic phosphopeptide and KLH conjugates. Antibodies were purified by affinity-chromatography using epitope-specific phosphopeptide. Non-phospho specific antibodies were removed by chromatography using non-phosphopeptide.
Applications	WB
Species Reactivity	Hu Ms Rt
Specificity	EPHA3 (Phospho-Tyr602) Antibody detects endogenous levels of EPHA3 only when phosphorylated at Tyr602
Immunogen Type	Peptide
Immunogen Description	A synthesized peptide derived from human EPHA3 (Phospho-Tyr602)
Target Name	EPHA3
Modification	Phospho
Other Names	EPHA3, CEK4 kinase, EPH receptor A3, Ephrin type-A receptor 3, Eph-like tyrosine kinase 1, ETK1, HEK4, EPH-like kinase 4, HEK, Human embryo kinase 1, MEK4 kinase, Human embryo kinase, Tyrosine-protein kinase TYRO4, TYRO4, EK4, Eph kinase A3, ETK
Accession No.	Swiss-Prot#: P29320NCBI Gene ID: 2042
Target Species	human
Calculated MW	110kd
Concentration	1.0mg/ml
Formulation	Rabbit IgG in phosphate buffered saline (without Mg ²⁺ and Ca ²⁺), pH 7.4, 150mM NaCl, 0.02% sodium azide and 50% glycerol.
Storage	Store at -20°C

Application Details

Western blotting: 1:1000

Images



Western blot analysis EPHA3 (Phospho-Tyr602) using EGF treated HeLa whole cell lysates

Note: This product is for in vitro research use only and is not intended for use in humans or animals.