

EPHB1/2 (Phospho-Tyr778/Tyr780) Antibody

Catalog No: #12718



Package Size: #12718-1 50ul #12718-2 100ul

Orders: order@signalwayantibody.comSupport: tech@signalwayantibody.com

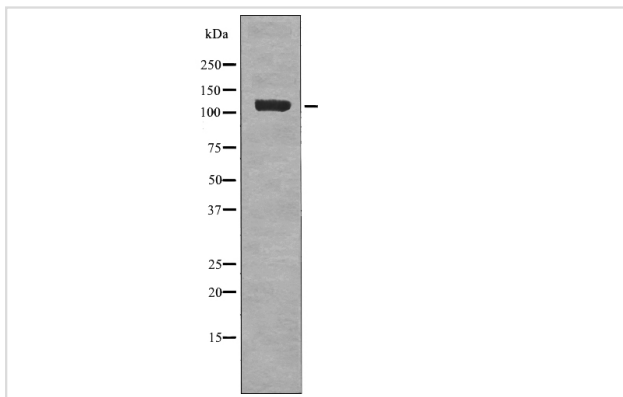
Description

| | |
|-----------------------|---|
| Product Name | EPHB1/2 (Phospho-Tyr778/Tyr780) Antibody |
| Host Species | Rabbit |
| Clonality | Polyclonal |
| Purification | Antibodies were produced by immunizing rabbits with synthetic phosphopeptide and KLH conjugates. Antibodies were purified by affinity-chromatography using epitope-specific phosphopeptide. Non-phospho specific antibodies were removed by chromatography using non-phosphopeptide. |
| Applications | WB |
| Species Reactivity | Hu Ms Rt |
| Specificity | EPHB1/2 (Phospho-Tyr778/Tyr780) Antibody detects endogenous levels of EPHB1/2 only when phosphorylated at Tyr778/Tyr780 |
| Immunogen Type | Peptide |
| Immunogen Description | A synthesized peptide derived from human EPHB1/2 (Phospho-Tyr778/Tyr780) |
| Target Name | EPHB1/2 |
| Modification | Phospho |
| Other Names | EPHB1, Cek6, EK6, ELK, Ephrin type-B receptor 1, Hek6, EPHT2, NET, EPH receptor B1, EPH tyrosine kinase 2, EPH-like kinase 6, Soluble EPHB1 variant 1 |
| Accession No. | Swiss-Prot#: P54762/P29323NCBI Gene ID: 2047/2048 |
| Target Species | human |
| Calculated MW | 117kd |
| Concentration | 1.0mg/ml |
| Formulation | Rabbit IgG in phosphate buffered saline (without Mg ²⁺ and Ca ²⁺), pH 7.4, 150mM NaCl, 0.02% sodium azide and 50% glycerol. |
| Storage | Store at -20°C |

Application Details

Western blotting: 1:1000

Images



Western blot analysis EPHB1/2 (Phospho-Tyr778/Tyr780) using serum treated K562 whole cell lysates

Note: This product is for in vitro research use only and is not intended for use in humans or animals.