

EPHB3 (Phospho-Tyr608) Antibody

Catalog No: #12719



Package Size: #12719-1 50ul #12719-2 100ul

Orders: order@signalwayantibody.comSupport: tech@signalwayantibody.com

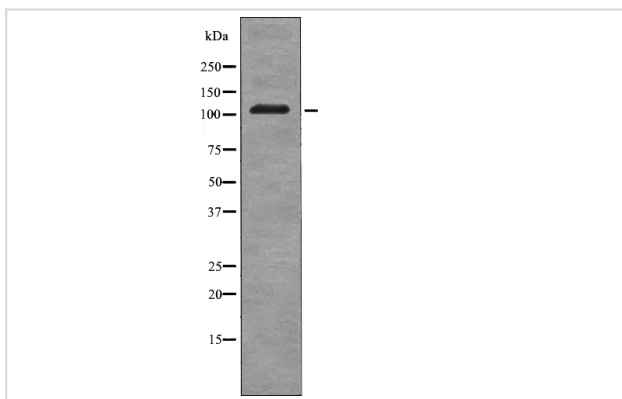
Description

Product Name	EPHB3 (Phospho-Tyr608) Antibody
Host Species	Rabbit
Clonality	Polyclonal
Purification	Antibodies were produced by immunizing rabbits with synthetic phosphopeptide and KLH conjugates. Antibodies were purified by affinity-chromatography using epitope-specific phosphopeptide. Non-phospho specific antibodies were removed by chromatography using non-phosphopeptide.
Applications	WB
Species Reactivity	Hu Ms
Specificity	EPHB3 (Phospho-Tyr608) Antibody detects endogenous levels of EPHB3 only when phosphorylated at Tyr608
Immunogen Type	Peptide
Immunogen Description	A synthesized peptide derived from human EPHB3 (Phospho-Tyr608)
Target Name	EPHB3
Modification	Phospho
Other Names	EPHB3, Cek10, ETK2, HEK2 protein kinase, Embryonic kinase 2, EPH receptor B3, EPH-like kinase 2, Ephrin type-B receptor 3, MDK5, Sek4, TYRO6, EK2, EPH-like tyrosine kinase 2, EPH-like tyrosine kinase-2, HEK2, Human embryo kinase 2, Tyrosine-protein k ...
Accession No.	Swiss-Prot#: P54753NCBI Gene ID: 2049
Target Species	human
Calculated MW	110kd
Concentration	1.0mg/ml
Formulation	Rabbit IgG in phosphate buffered saline (without Mg ²⁺ and Ca ²⁺), pH 7.4, 150mM NaCl, 0.02% sodium azide and 50% glycerol.
Storage	Store at -20°C

Application Details

Western blotting: 1:1000

Images



Western blot analysis EPHB3 (Phospho-Tyr608) using P
Etoposide treated 293 whole cell lysates

Note: This product is for in vitro research use only and is not intended for use in humans or animals.