

EPHB6 (Phospho-Tyr636) Antibody

Catalog No: #12722



Package Size: #12722-1 50ul #12722-2 100ul

Orders: order@signalwayantibody.comSupport: tech@signalwayantibody.com

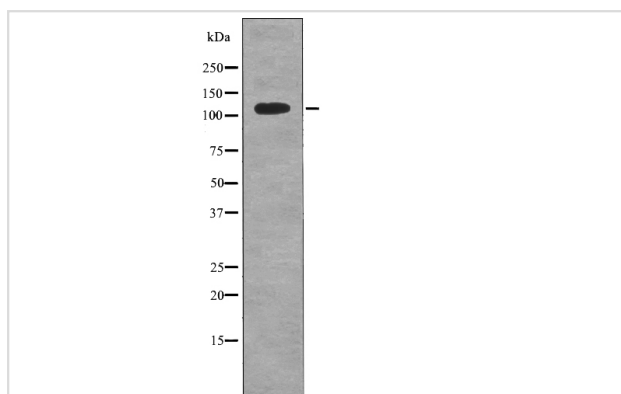
Description

Product Name	EPHB6 (Phospho-Tyr636) Antibody
Host Species	Rabbit
Clonality	Polyclonal
Purification	Antibodies were produced by immunizing rabbits with synthetic phosphopeptide and KLH conjugates. Antibodies were purified by affinity-chromatography using epitope-specific phosphopeptide. Non-phospho specific antibodies were removed by chromatography using non-phosphopeptide.
Applications	WB
Species Reactivity	Hu Ms Rt
Specificity	EPHB6 (Phospho-Tyr636) Antibody detects endogenous levels of EPHB6 only when phosphorylated at Tyr636
Immunogen Type	Peptide
Immunogen Description	A synthesized peptide derived from human EPHB6 (Phospho-Tyr636)
Target Name	EPHB6
Modification	Phospho
Other Names	EPHB6, Cekl, EPH receptor B6, Ephrin type-B receptor 6, HEP, MEP
Accession No.	Swiss-Prot#: O15197NCBI Gene ID: 2051
Target Species	human
Calculated MW	119kd
Concentration	1.0mg/ml
Formulation	Rabbit IgG in phosphate buffered saline (without Mg ²⁺ and Ca ²⁺), pH 7.4, 150mM NaCl, 0.02% sodium azide and 50% glycerol.
Storage	Store at -20°C

Application Details

Western blotting: 1:1000

Images



Western blot analysis EPHB6 (Phospho-Tyr636) using ATP1
Rat brain tissue lysates

Note: This product is for in vitro research use only and is not intended for use in humans or animals.