

MYPT1 (Phospho-Ser507) Antibody

Catalog No: #12732



Package Size: #12732-1 50ul #12732-2 100ul

Orders: order@signalwayantibody.comSupport: tech@signalwayantibody.com

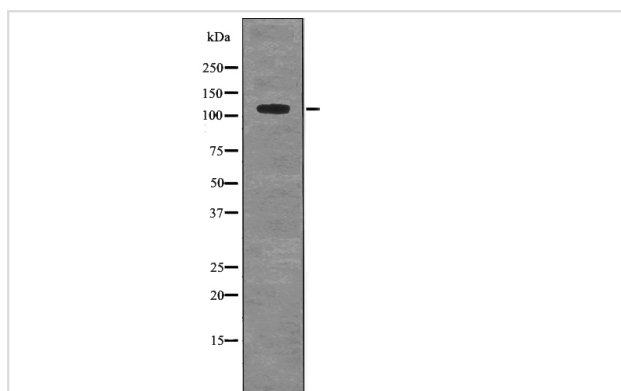
Description

Product Name	MYPT1 (Phospho-Ser507) Antibody
Host Species	Rabbit
Clonality	Polyclonal
Purification	Antibodies were produced by immunizing rabbits with synthetic phosphopeptide and KLH conjugates. Antibodies were purified by affinity-chromatography using epitope-specific phosphopeptide. Non-phospho specific antibodies were removed by chromatography using non-phosphopeptide.
Applications	WB
Species Reactivity	Hu Ms
Specificity	MYPT1 (Phospho-Ser507) Antibody detects endogenous levels of MYPT1 only when phosphorylated at Ser507
Immunogen Type	Peptide
Immunogen Description	A synthesized peptide derived from human MYPT1 (Phospho-Ser507)
Target Name	MYPT1
Modification	Phospho
Other Names	PPP1R12A, M130, MYPT1, MBS, Myosin binding subunit
Accession No.	Swiss-Prot#: O14974NCBI Gene ID: 4659
Target Species	human
Calculated MW	115kd
Concentration	1.0mg/ml
Formulation	Rabbit IgG in phosphate buffered saline (without Mg ²⁺ and Ca ²⁺), pH 7.4, 150mM NaCl, 0.02% sodium azide and 50% glycerol.
Storage	Store at -20°C

Application Details

Western blotting: 1:1000

Images



Western blot analysis MYPT1 (Phospho-Ser507) using Insulin treated 293 whole cell lysates

Note: This product is for in vitro research use only and is not intended for use in humans or animals.