

SRPK1 (Phospho-Thr601) Antibody

Catalog No: #12738

Package Size: #12738-1 50ul #12738-2 100ul

Orders: order@signalwayantibody.com

Support: tech@signalwayantibody.com

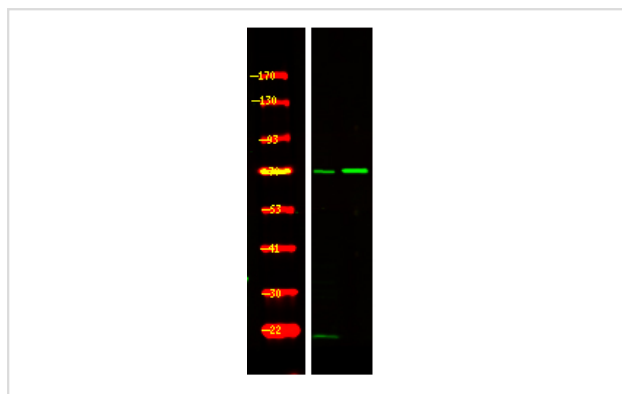
Description

| | |
|-----------------------|--|
| Product Name | SRPK1 (Phospho-Thr601) Antibody |
| Host Species | Rabbit |
| Clonality | Polyclonal |
| Purification | Antibodies were produced by immunizing rabbits with synthetic phosphopeptide and KLH conjugates. Antibodies were purified by affinity-chromatography using epitope-specific phosphopeptide. Non-phospho specific antibodies were removed by chromatography using non-phosphopeptide. |
| Applications | WB |
| Species Reactivity | Hu Ms |
| Specificity | SRPK1 (Phospho-Thr601) Antibody detects endogenous levels of SRPK1 only when phosphorylated at Thr601 |
| Immunogen Type | Peptide |
| Immunogen Description | A synthesized peptide derived from human SRPK1 (Phospho-Thr601) |
| Target Name | SRPK1 |
| Modification | Phospho |
| Other Names | SRPK1, SFRS protein kinase 1, SFRSK1, SR-protein-specific kinase 1, SRSF protein kinase 1 |
| Accession No. | Swiss-Prot#: Q96SB4NCBI Gene ID: 6732 |
| Target Species | human |
| Calculated MW | 95kd |
| Concentration | 1.0mg/ml |
| Formulation | Rabbit IgG in phosphate buffered saline (without Mg ²⁺ and Ca ²⁺), pH 7.4, 150mM NaCl, 0.02% sodium azide and 50% glycerol. |
| Storage | Store at -20°C |

Application Details

Western blotting: 1:1000

Images



Western Blot analysis of lysates of 1. HepG2 cell and 2. HepG2 cell treated with 100ng/mL LPS for 30min, using primary antibody at 1:1000 dilution.

Note: This product is for in vitro research use only and is not intended for use in humans or animals.