

Amyloid- β A4 (Phospho-Thr729) Antibody

Catalog No: #12742



Package Size: #12742-1 50ul #12742-2 100ul

Orders: order@signalwayantibody.comSupport: tech@signalwayantibody.com

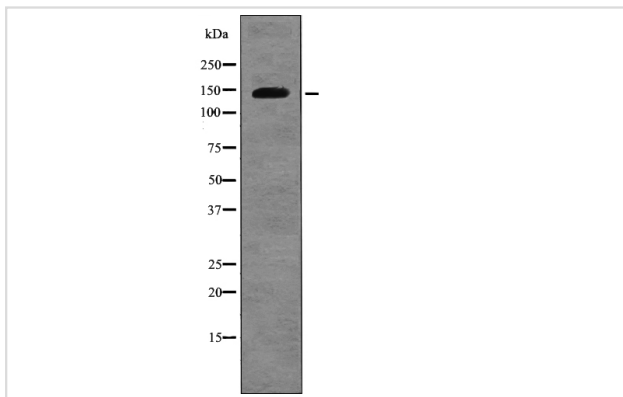
Description

Product Name	Amyloid- β A4 (Phospho-Thr729) Antibody
Host Species	Rabbit
Clonality	Polyclonal
Purification	Antibodies were produced by immunizing rabbits with synthetic phosphopeptide and KLH conjugates. Antibodies were purified by affinity-chromatography using epitope-specific phosphopeptide. Non-phospho specific antibodies were removed by chromatography using non-phosphopeptide.
Applications	WB
Species Reactivity	Hu Ms Rt
Specificity	Amyloid- β A4 (Phospho-Thr729) Antibody detects endogenous levels of Amyloid- β A4 only when phosphorylated at Thr729
Immunogen Type	Peptide
Immunogen Description	A synthesized peptide derived from human Amyloid- β A4 (Phospho-Thr729)
Target Name	Amyloid- β A4
Modification	Phospho
Other Names	APP, ABPP, A4, ABETA, AD1, Alzheimer disease, Amyloid beta, Beta-amyloid peptide, APPI, Beta amyloid, CVAP, AAA, PN2, PreA4, Amyloid beta A4 protein, Peptidase nexin-II, CTFgamma, PN-II, Protease nexin-II
Accession No.	Swiss-Prot#: P05067NCBI Gene ID: 351
Target Species	human
Calculated MW	140kd
Concentration	1.0mg/ml
Formulation	Rabbit IgG in phosphate buffered saline (without Mg ²⁺ and Ca ²⁺), pH 7.4, 150mM NaCl, 0.02% sodium azide and 50% glycerol.
Storage	Store at -20°C

Application Details

Western blotting: 1:1000

Images



Western blot analysis Amyloid- β A4 (Phospho-Thr729) using HeLa whole cell lysates

Note: This product is for in vitro research use only and is not intended for use in humans or animals.