

## ATP1A1 (Phospho-Tyr260) Antibody

Catalog No: #12743



Package Size: #12743-1 50ul #12743-2 100ul

Orders: [order@signalwayantibody.com](mailto:order@signalwayantibody.com)Support: [tech@signalwayantibody.com](mailto:tech@signalwayantibody.com)

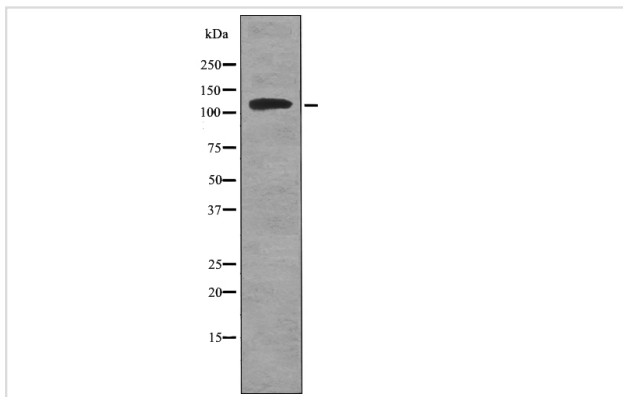
## Description

|                       |   |
|-----------------------|---|
| Product Name          | ATP1A1 (Phospho-Tyr260) Antibody  |
| Host Species          | Rabbit  |
| Clonality             | Polyclonal  |
| Purification          | Antibodies were produced by immunizing rabbits with synthetic phosphopeptide and KLH conjugates.<br>Antibodies were purified by affinity-chromatography using epitope-specific phosphopeptide. Non-phospho specific antibodies were removed by chromatography using non-phosphopeptide. |
| Applications          | WB  |
| Species Reactivity    | Hu Ms Rt  |
| Specificity           | ATP1A1 (Phospho-Tyr260) Antibody detects endogenous levels of ATP1A1 only when phosphorylated at Tyr260   |
| Immunogen Type        | Peptide   |
| Immunogen Description | A synthesized peptide derived from human ATP1A1 (Phospho-Tyr260)  |
| Target Name           | ATP1A1  |
| Modification          | Phospho   |
| Other Names           | ATP1A1, Na <sup>+</sup> , K <sup>+</sup> ATPase alpha subunit, Na,K-ATPase alpha-1 subunit, Na <sup>+</sup> /K <sup>+</sup> ATPase 1, Sodium pump 1, Sodium pump subunit alpha-1  |
| Accession No.         | Swiss-Prot#: P05023NCBI Gene ID: 476  |
| Target Species        | human   |
| Calculated MW         | 112kd   |
| Concentration         | 1.0mg/ml  |
| Formulation           | Rabbit IgG in phosphate buffered saline (without Mg <sup>2+</sup> and Ca <sup>2+</sup> ), pH 7.4, 150mM NaCl, 0.02% sodium azide and 50% glycerol.  |
| Storage               | Store at -20°C  |

## Application Details

Western blotting: 1:1000

## Images



Western blot analysis ATP1A1 (Phospho-Tyr260) using HepG2 whole cell lysates

---

Note: This product is for in vitro research use only and is not intended for use in humans or animals.