

CD88 (Phospho-Ser327) Antibody

Catalog No: #12748



Package Size: #12748-1 50ul #12748-2 100ul

Orders: order@signalwayantibody.comSupport: tech@signalwayantibody.com

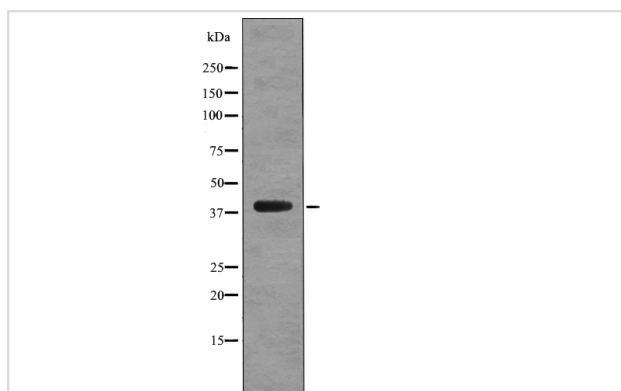
Description

Product Name	CD88 (Phospho-Ser327) Antibody
Host Species	Rabbit
Clonality	Polyclonal
Purification	Antibodies were produced by immunizing rabbits with synthetic phosphopeptide and KLH conjugates. Antibodies were purified by affinity-chromatography using epitope-specific phosphopeptide. Non-phospho specific antibodies were removed by chromatography using non-phosphopeptide.
Applications	WB
Species Reactivity	Hu
Specificity	CD88 (Phospho-Ser327) Antibody detects endogenous levels of CD88 only when phosphorylated at Ser327
Immunogen Type	Peptide
Immunogen Description	A synthesized peptide derived from human CD88 (Phospho-Ser327)
Target Name	CD88
Modification	Phospho
Other Names	C5AR1, C5A, C5a-R, C5a ligand, C5a receptor, CD88, C5a anaphylatoxin receptor, C5AR, C5R1, CD88 antigen
Accession No.	Swiss-Prot#: P21730NCBI Gene ID: 728
Target Species	human
Calculated MW	39kd
Concentration	1.0mg/ml
Formulation	Rabbit IgG in phosphate buffered saline (without Mg ²⁺ and Ca ²⁺), pH 7.4, 150mM NaCl, 0.02% sodium azide and 50% glycerol.
Storage	Store at -20°C

Application Details

Western blotting: 1:1000

Images



Western blot analysis CD88 (Phospho-Ser327) using COLO205 whole cell lysates

Note: This product is for in vitro research use only and is not intended for use in humans or animals.