

## eIF2B (Phospho-Ser67) Antibody

Catalog No: #12750



Package Size: #12750-1 50ul #12750-2 100ul

Orders: order@signalwayantibody.com

Support: tech@signalwayantibody.com

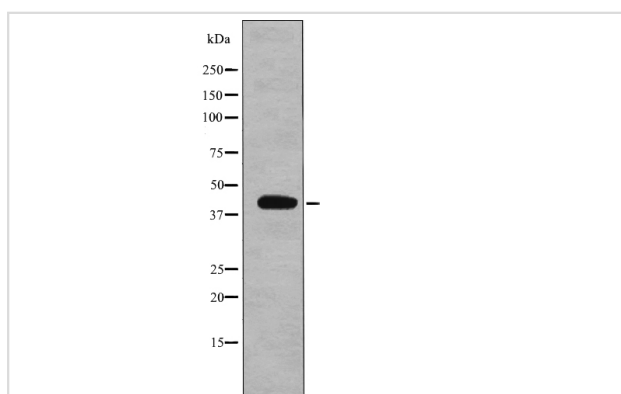
## Description

Product Name	eIF2B (Phospho-Ser67) Antibody
Host Species	Rabbit
Clonality	Polyclonal
Purification	Antibodies were produced by immunizing rabbits with synthetic phosphopeptide and KLH conjugates. Antibodies were purified by affinity-chromatography using epitope-specific phosphopeptide. Non-phospho specific antibodies were removed by chromatography using non-phosphopeptide.
Applications	WB
Species Reactivity	Hu
Specificity	eIF2B (Phospho-Ser67) Antibody detects endogenous levels of eIF2B only when phosphorylated at Ser67
Immunogen Type	Peptide
Immunogen Description	A synthesized peptide derived from human eIF2B (Phospho-Ser67)
Target Name	eIF2B
Modification	Phospho
Other Names	EIF2S2, EIF-2-beta, EIF2, EIF2B, EIF2beta, PPP1R67
Accession No.	Swiss-Prot#: P20042NCBI Gene ID: 8894
Target Species	human
Calculated MW	40kd
Concentration	1.0mg/ml
Formulation	Rabbit IgG in phosphate buffered saline (without Mg <sup>2+</sup> and Ca <sup>2+</sup> ), pH 7.4, 150mM NaCl, 0.02% sodium azide and 50% glycerol.
Storage	Store at -20°C

## Application Details

Western blotting: 1:1000

## Images



Western blot analysis eIF2B (Phospho-Ser67) using EGF treated HepG2 whole cell lysates

---

Note: This product is for in vitro research use only and is not intended for use in humans or animals.