

HSP105 (Phospho-Ser809) Antibody

Catalog No: #12761

Package Size: #12761-1 50ul #12761-2 100ul

Orders: order@signalwayantibody.comSupport: tech@signalwayantibody.com

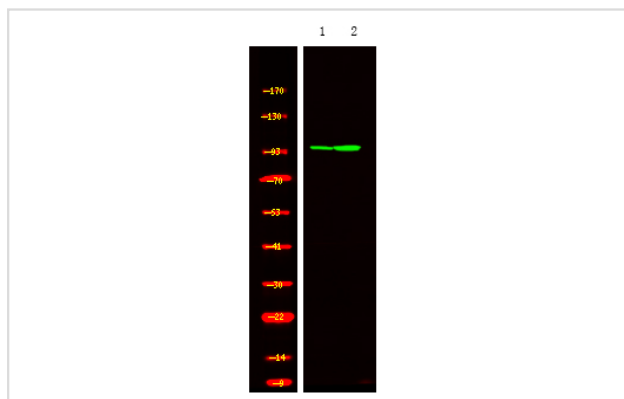
Description

Product Name	HSP105 (Phospho-Ser809) Antibody
Host Species	Rabbit
Clonality	Polyclonal
Purification	Antibodies were produced by immunizing rabbits with synthetic phosphopeptide and KLH conjugates. Antibodies were purified by affinity-chromatography using epitope-specific phosphopeptide. Non-phospho specific antibodies were removed by chromatography using non-phosphopeptide.
Applications	WB
Species Reactivity	Hu Ms Rt
Specificity	HSP105 (Phospho-Ser809) Antibody detects endogenous levels of HSP105 only when phosphorylated at Ser809
Immunogen Type	Peptide
Immunogen Description	A synthesized peptide derived from human HSP105 (Phospho-Ser809)
Target Name	HSP105
Modification	Phospho
Other Names	HSPH1, Heat shock 105kD beta, Heat shock 110 kDa protein, Heat shock protein 105 kDa, HSP105, HSP110, Heat-shock protein 105 kd, HSP105A, HSP105B, NY-CO-25, KIAA0201, Antigen NY-CO-25, Heat shock 105kD alpha, Heat shock 105kDa protein 1, Heat shock p ...
Accession No.	Swiss-Prot#: Q92598NCBI Gene ID: 10808
Target Species	human
Calculated MW	100kd
Concentration	1.0mg/ml
Formulation	Rabbit IgG in phosphate buffered saline (without Mg2+ and Ca2+), pH 7.4, 150mM NaCl, 0.02% sodium azide and 50% glycerol.
Storage	Store at -20°C

Application Details

Western blotting: 1:1000

Images



Western Blot analysis of lysates of 1. MCF7 cell and 2. MCF7 cell treated with 100ng/mL LPS for 30min, using primary antibody at 1:1000 dilution.

Note: This product is for in vitro research use only and is not intended for use in humans or animals.