

Myd88 (Phospho-Tyr257) Antibody

Catalog No: #12764

Orders: order@signalwayantibody.comSupport: tech@signalwayantibody.com

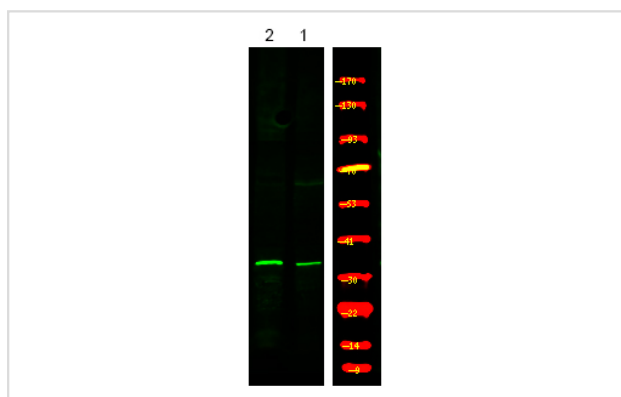
Description

Product Name	Myd88 (Phospho-Tyr257) Antibody
Host Species	Rabbit
Clonality	Polyclonal
Purification	Antibodies were produced by immunizing rabbits with synthetic phosphopeptide and KLH conjugates. Antibodies were purified by affinity-chromatography using epitope-specific phosphopeptide. Non-phospho specific antibodies were removed by chromatography using non-phosphopeptide.
Applications	WB
Species Reactivity	Hu Ms Rt
Specificity	Myd88 (Phospho-Tyr257) Antibody detects endogenous levels of Myd88 only when phosphorylated at Tyr257
Immunogen Type	Peptide
Immunogen Description	A synthesized peptide derived from human Myd88 (Phospho-Tyr257)
Target Name	Myd88
Modification	Phospho
Other Names	MYD88, MYD88D
Accession No.	Swiss-Prot#: Q99836NCBI Gene ID: 4615
Target Species	human
Calculated MW	34kd
Concentration	1.0mg/ml
Formulation	Rabbit IgG in phosphate buffered saline (without Mg ²⁺ and Ca ²⁺), pH 7.4, 150mM NaCl, 0.02% sodium azide and 50% glycerol.
Storage	Store at -20°C

Application Details

Western blotting: 1:1000

Images



Western Blot analysis of lysates of 1. A431 cell and 2. A431 cell with Serum-free treated, using primary antibody at 1:1000 dilution.

Note: This product is for in vitro research use only and is not intended for use in humans or animals.