

## NDRG1 (Phospho-Thr346) Antibody

Catalog No: #12767



Package Size: #12767-1 50ul #12767-2 100ul

Orders: [order@signalwayantibody.com](mailto:order@signalwayantibody.com)Support: [tech@signalwayantibody.com](mailto:tech@signalwayantibody.com)

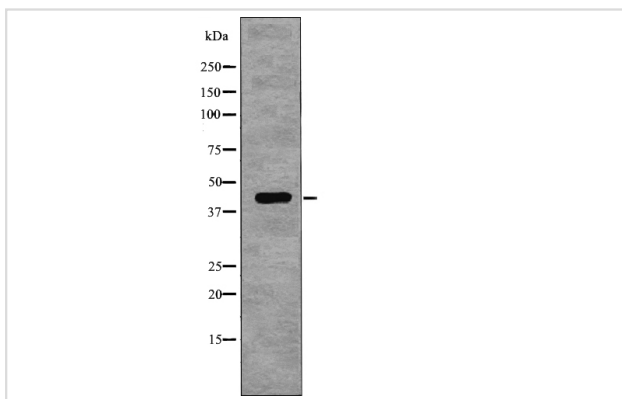
## Description

Product Name	NDRG1 (Phospho-Thr346) Antibody
Host Species	Rabbit
Clonality	Polyclonal
Purification	Antibodies were produced by immunizing rabbits with synthetic phosphopeptide and KLH conjugates. Antibodies were purified by affinity-chromatography using epitope-specific phosphopeptide. Non-phospho specific antibodies were removed by chromatography using non-phosphopeptide.
Applications	WB
Species Reactivity	Hu Ms Rt
Specificity	NDRG1 (Phospho-Thr346) Antibody detects endogenous levels of NDRG1 only when phosphorylated at Thr346
Immunogen Type	Peptide
Immunogen Description	A synthesized peptide derived from human NDRG1 (Phospho-Thr346)
Target Name	NDRG1
Modification	Phospho
Other Names	NDRG1, CMT4D, DRG-1, GC4, HMSNL, Protein regulated by oxygen-1, PROXY1, Protein NDRG1, TARG1, TDD5, NDR1, RTP, CAP43, N-myc downstream regulated 1, NMSL, RIT42
Accession No.	Swiss-Prot#: Q92597 NCBI Gene ID: 10397
Target Species	human
Calculated MW	43kd
Concentration	1.0mg/ml
Formulation	Rabbit IgG in phosphate buffered saline (without Mg <sup>2+</sup> and Ca <sup>2+</sup> ), pH 7.4, 150mM NaCl, 0.02% sodium azide and 50% glycerol.
Storage	Store at -20°C

## Application Details

Western blotting: 1:1000

## Images



Western blot analysis NDRG1 (Phospho-Thr346) using EGF treated 293 whole cell lysates

---

Note: This product is for in vitro research use only and is not intended for use in humans or animals.