

NPM (Phospho-Ser4) Antibody

Catalog No: #12769



Package Size: #12769-1 50ul #12769-2 100ul

Orders: order@signalwayantibody.com

Support: tech@signalwayantibody.com

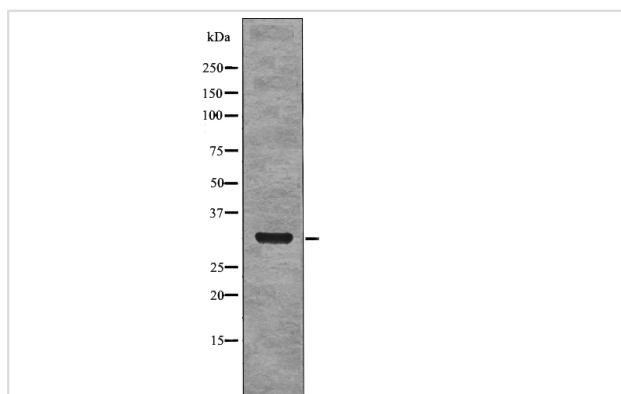
Description

Product Name	NPM (Phospho-Ser4) Antibody
Host Species	Rabbit
Clonality	Polyclonal
Purification	Antibodies were produced by immunizing rabbits with synthetic phosphopeptide and KLH conjugates. Antibodies were purified by affinity-chromatography using epitope-specific phosphopeptide. Non-phospho specific antibodies were removed by chromatography using non-phosphopeptide.
Applications	WB
Species Reactivity	Hu
Specificity	NPM (Phospho-Ser4) Antibody detects endogenous levels of NPM only when phosphorylated at Ser4
Immunogen Type	Peptide
Immunogen Description	A synthesized peptide derived from human NPM (Phospho-Ser4)
Target Name	NPM
Modification	Phospho
Other Names	NPM1, NPM, Nucleolar phosphoprotein B23, Nucleolar protein NO38, Numatrin, B23, Nucleophosmin
Accession No.	Swiss-Prot#: P06748NCBI Gene ID: 4869
Target Species	human
Calculated MW	32kd, 38kd
Concentration	1.0mg/ml
Formulation	Rabbit IgG in phosphate buffered saline (without Mg ²⁺ and Ca ²⁺), pH 7.4, 150mM NaCl, 0.02% sodium azide and 50% glycerol.
Storage	Store at -20°C

Application Details

Western blotting: 1:1000

Images



Western blot analysis NPM (Phospho-Ser4) using EGF treated A431 whole cell lysates

Note: This product is for in vitro research use only and is not intended for use in humans or animals.