

## NPM (Phospho-Ser70) Antibody

Catalog No: #12770



Package Size: #12770-1 50ul #12770-2 100ul

Orders: [order@signalwayantibody.com](mailto:order@signalwayantibody.com)Support: [tech@signalwayantibody.com](mailto:tech@signalwayantibody.com)

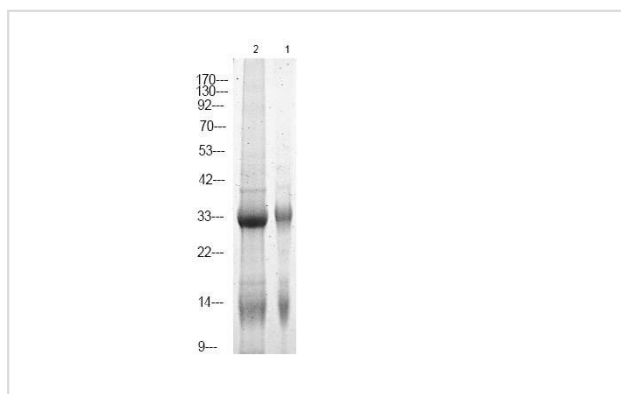
## Description

|                       |                                                                                                                                                                                                                                                                                      |
|-----------------------|--------------------------------------------------------------------------------------------------------------------------------------------------------------------------------------------------------------------------------------------------------------------------------------|
| Product Name          | NPM (Phospho-Ser70) Antibody                                                                                                                                                                                                                                                         |
| Host Species          | Rabbit                                                                                                                                                                                                                                                                               |
| Clonality             | Polyclonal                                                                                                                                                                                                                                                                           |
| Purification          | Antibodies were produced by immunizing rabbits with synthetic phosphopeptide and KLH conjugates. Antibodies were purified by affinity-chromatography using epitope-specific phosphopeptide. Non-phospho specific antibodies were removed by chromatography using non-phosphopeptide. |
| Applications          | WB                                                                                                                                                                                                                                                                                   |
| Species Reactivity    | Hu Ms Rt                                                                                                                                                                                                                                                                             |
| Specificity           | NPM (Phospho-Ser70) Antibody detects endogenous levels of NPM only when phosphorylated at Ser70                                                                                                                                                                                      |
| Immunogen Type        | Peptide                                                                                                                                                                                                                                                                              |
| Immunogen Description | A synthesized peptide derived from human NPM (Phospho-Ser70)                                                                                                                                                                                                                         |
| Target Name           | NPM                                                                                                                                                                                                                                                                                  |
| Modification          | Phospho                                                                                                                                                                                                                                                                              |
| Other Names           | NPM1, NPM, Nucleolar phosphoprotein B23, Nucleolar protein NO38, Numatrin, B23, Nucleophosmin                                                                                                                                                                                        |
| Accession No.         | Swiss-Prot#: P06748NCBI Gene ID: 4869                                                                                                                                                                                                                                                |
| Target Species        | human                                                                                                                                                                                                                                                                                |
| Calculated MW         | 32kd, 38kd                                                                                                                                                                                                                                                                           |
| Concentration         | 1.0mg/ml                                                                                                                                                                                                                                                                             |
| Formulation           | Rabbit IgG in phosphate buffered saline (without Mg <sup>2+</sup> and Ca <sup>2+</sup> ), pH 7.4, 150mM NaCl, 0.02% sodium azide and 50% glycerol.                                                                                                                                   |
| Storage               | Store at -20°C                                                                                                                                                                                                                                                                       |

## Application Details

Western blotting: 1:1000

## Images



Western Blot analysis of lysates of 1. RAW 264.7 cell and 2. Raji cell, using primary antibody at 1:1000 dilution.

---

Note: This product is for in vitro research use only and is not intended for use in humans or animals.