

RCC1 (Phospho-Ser11) Antibody

Catalog No: #12779

Package Size: #12779-1 50ul #12779-2 100ul

Orders: order@signalwayantibody.comSupport: tech@signalwayantibody.com

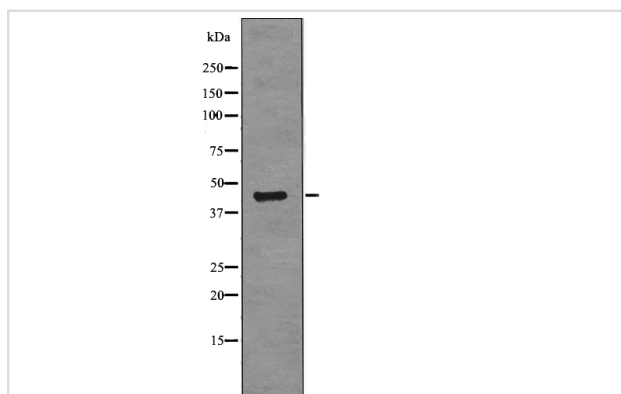
Description

Product Name	RCC1 (Phospho-Ser11) Antibody
Host Species	Rabbit
Clonality	Polyclonal
Purification	Antibodies were produced by immunizing rabbits with synthetic phosphopeptide and KLH conjugates. Antibodies were purified by affinity-chromatography using epitope-specific phosphopeptide. Non-phospho specific antibodies were removed by chromatography using non-phosphopeptide.
Applications	WB
Species Reactivity	Hu Ms Rt
Specificity	RCC1 (Phospho-Ser11) Antibody detects endogenous levels of RCC1 only when phosphorylated at Ser11
Immunogen Type	Peptide
Immunogen Description	A synthesized peptide derived from human RCC1 (Phospho-Ser11)
Target Name	RCC1
Modification	Phospho
Other Names	RCC1, Cell cycle regulatory protein, Chromosome condensation 1, RCC1-I, SNHG3-RCC1, CHC1
Accession No.	Swiss-Prot#: P18754NCBI Gene ID: 1104
Target Species	human
Calculated MW	45kd
Concentration	1.0mg/ml
Formulation	Rabbit IgG in phosphate buffered saline (without Mg ²⁺ and Ca ²⁺), pH 7.4, 150mM NaCl, 0.02% sodium azide and 50% glycerol.
Storage	Store at -20°C

Application Details

Western blotting: 1:1000

Images



Western blot analysis RCC1 (Phospho-Ser11) using K562 whole cell lysates

Note: This product is for in vitro research use only and is not intended for use in humans or animals.