

## R-Ras (Phospho-Tyr66) Antibody

Catalog No: #12780

Package Size: #12780-1 50ul #12780-2 100ul

Orders: order@signalwayantibody.com

Support: tech@signalwayantibody.com

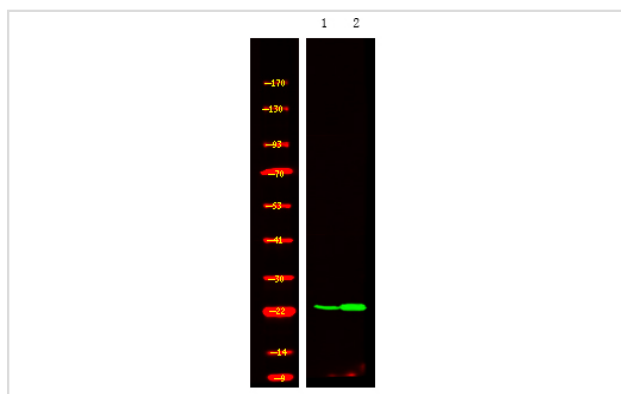
## Description

Product Name	R-Ras (Phospho-Tyr66) Antibody
Host Species	Rabbit
Clonality	Polyclonal
Purification	Antibodies were produced by immunizing rabbits with synthetic phosphopeptide and KLH conjugates. Antibodies were purified by affinity-chromatography using epitope-specific phosphopeptide. Non-phospho specific antibodies were removed by chromatography using non-phosphopeptide.
Applications	WB
Species Reactivity	Hu Ms Rt
Specificity	R-Ras (Phospho-Tyr66) Antibody detects endogenous levels of R-Ras only when phosphorylated at Tyr66
Immunogen Type	Peptide
Immunogen Description	A synthesized peptide derived from human R-Ras (Phospho-Tyr66)
Target Name	R-Ras
Modification	Phospho
Other Names	RRAS, Oncogene RRAS, R-ras, Ras-related protein R-Ras2, p23, Ras-related protein R-Ras
Accession No.	Swiss-Prot#: P10301NCBI Gene ID: 6237
Target Species	human
Calculated MW	23kd
Concentration	1.0mg/ml
Formulation	Rabbit IgG in phosphate buffered saline (without Mg <sup>2+</sup> and Ca <sup>2+</sup> ), pH 7.4, 150mM NaCl, 0.02% sodium azide and 50% glycerol.
Storage	Store at -20°C

## Application Details

Western blotting: 1:1000

## Images



Western Blot analysis of lysates of 1. A549 cell and 2. A549 cell treated with 100ng/mL LPS for 30min, using primary antibody at 1:1000 dilution.

---

Note: This product is for in vitro research use only and is not intended for use in humans or animals.