

S100A9 (Phospho-Thr113) Antibody

Catalog No: #12782

Orders: order@signalwayantibody.comSupport: tech@signalwayantibody.com

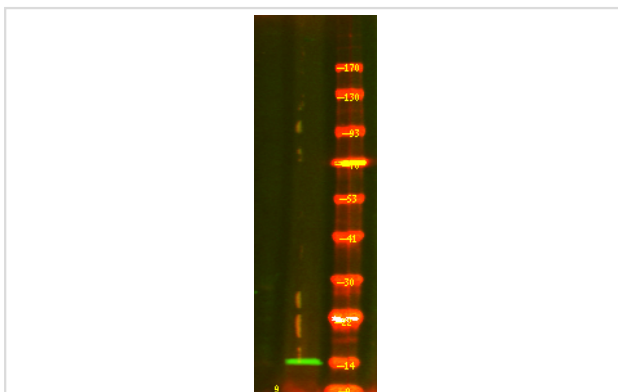
Description

| | |
|-----------------------|--|
| Product Name | S100A9 (Phospho-Thr113) Antibody |
| Host Species | Rabbit |
| Clonality | Polyclonal |
| Purification | Antibodies were produced by immunizing rabbits with synthetic phosphopeptide and KLH conjugates. Antibodies were purified by affinity-chromatography using epitope-specific phosphopeptide. Non-phospho specific antibodies were removed by chromatography using non-phosphopeptide. |
| Applications | WB |
| Species Reactivity | Hu |
| Specificity | S100A9 (Phospho-Thr113) Antibody detects endogenous levels of S100A9 only when phosphorylated at Thr113 |
| Immunogen Type | Peptide |
| Immunogen Description | A synthesized peptide derived from human S100A9 (Phospho-Thr113) |
| Target Name | S100A9 |
| Modification | Phospho |
| Other Names | S100A9, 60B8AG, Calgranulin B, CFAG, CAGB, Calgranulin-B, Calprotectin L1H subunit, CGLB, L1Ag, MRP14, NIF, p14, Protein S100-A9, LIAG, MAC387, MRP-14 |
| Accession No. | Swiss-Prot#: P06702NCBI Gene ID: 6280 |
| Target Species | human |
| Calculated MW | 13kd |
| Concentration | 1.0mg/ml |
| Formulation | Rabbit IgG in phosphate buffered saline (without Mg ²⁺ and Ca ²⁺), pH 7.4, 150mM NaCl, 0.02% sodium azide and 50% glycerol. |
| Storage | Store at -20°C |

Application Details

Western blotting: 1:1000

Images



Western Blot analysis of lysates of A549 cell (Left) and A549 cell treated with 100ng/mL LPS for 30min (Right), using primary antibody at 1:1000 dilution.

Published Papers

el at., Intracellular S100A9 Promotes Myeloid-Derived Suppressor Cells During Late Sepsis. In Front Immunol on 2017 Nov 17 by Jun Dai, Ajinkya Kumbhare, et al.. PMID: 29204146, (2017)

[PMID:29204146](#)

Note: This product is for in vitro research use only and is not intended for use in humans or animals.