

NF- $\kappa$ B p65 Polyclonal Antibody

Catalog No: #27518

Package Size: #27518-1 50ul #27518-2 100ul

Orders: [order@signalwayantibody.com](mailto:order@signalwayantibody.com)Support: [tech@signalwayantibody.com](mailto:tech@signalwayantibody.com)

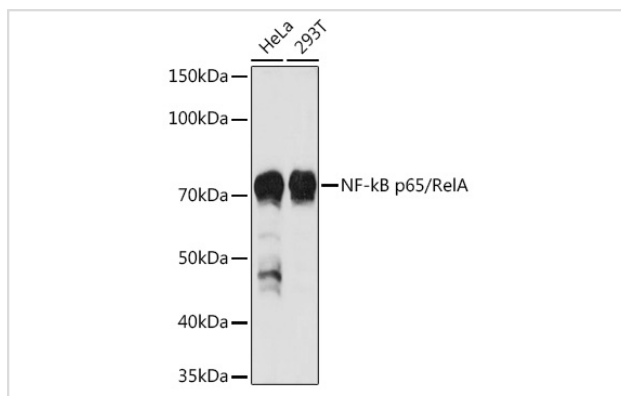
## Description

Product Name	NF- $\kappa$ B p65 Polyclonal Antibody
Host Species	Rabbit
Clonality	Polyclonal
Isotype	IgG
Purification	Affinity purification
Applications	WB,IHC,IF
Species Reactivity	Human,Mouse,Rat
Immunogen Description	A synthetic peptide of human NF- $\kappa$ B p65/RelA (NP_068810.3).
Other Names	NFKB3;p65;NF- $\kappa$ B p65;RELA;CMCU
Accession No.	Uniprot:Q04206GeneID:5970
Calculated MW	65kDa
SDS-PAGE MW	65KDa
Formulation	PBS with 0.02% sodium azide,50% glycerol,pH7.3.
Storage	Store at -20°C. Avoid freeze / thaw cycles.

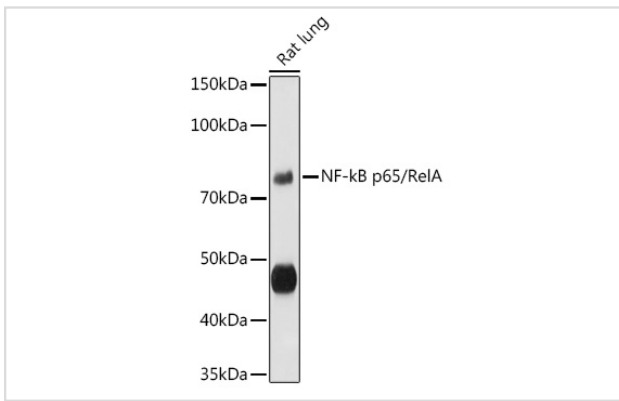
## Application Details

WB  $\square$  1:500 - 1:1000 IHC  $\square$  1:50 - 1:200 IF  $\square$  1:50 - 1:200

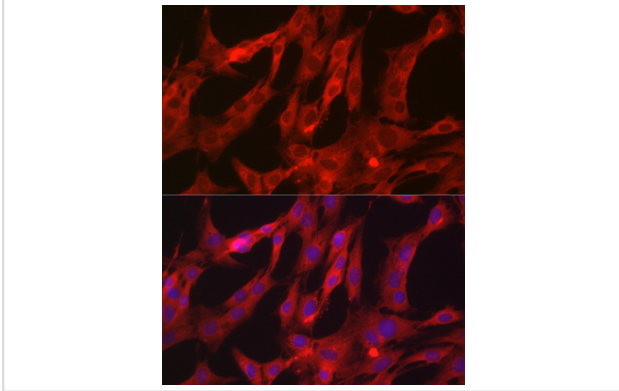
## Images



Western blot analysis of extracts of various cell lines, using NF- $\kappa$ B p65/RelA antibody.



Western blot analysis of extracts of Rat lung , using NF-kB p65/RelA antibody.



Immunofluorescence analysis of C6 cells using [KO Validated] NF-kB p65/RelA Rabbit pAb.

## Background

NF-kappa-B is a ubiquitous transcription factor involved in several biological processes. It is held in the cytoplasm in an inactive state by specific inhibitors. Upon degradation of the inhibitor, NF-kappa-B moves to the nucleus and activates transcription of specific genes. NF-kappa-B is composed of NFKB1 or NFKB2 bound to either REL, RELA, or RELB. The most abundant form of NF-kappa-B is NFKB1 complexed with the product of this gene, RELA. Four transcript variants encoding different isoforms have been found for this gene.

Note: This product is for in vitro research use only and is not intended for use in humans or animals.